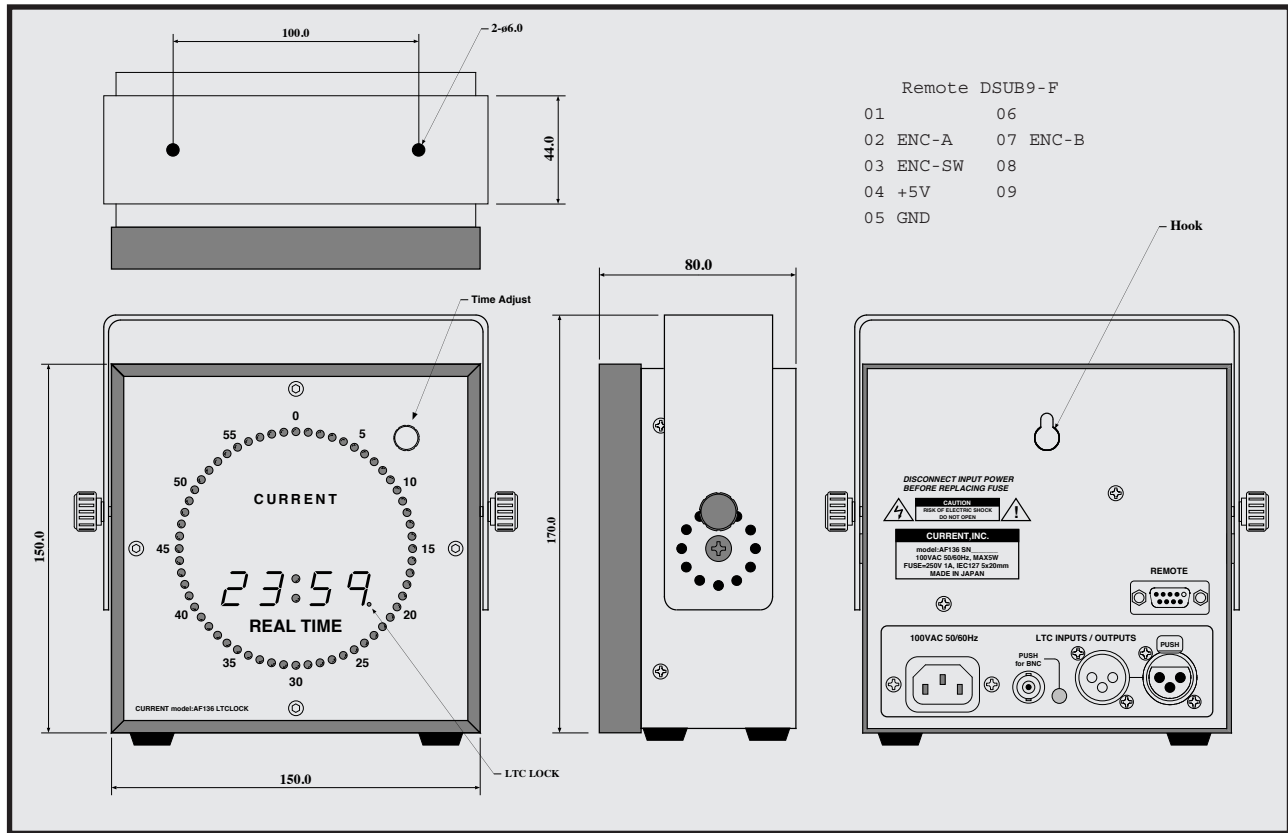


CURRENT PRODUCTS model:AF136

LTCLOCK



Remote DSUB9-F	
01	06
02	ENC-A 07 ENC-B
03	ENC-SW 08
04	+5V 09
05	GND

Clock display by LTC
 Desktop, suspension, wall hangings
 Angle variable mounting bracket
 Automatic Free running mode
 Cascade connection
 Logo indication (option)
 24, 25, 29.97, 30 frame rates

AF136 is real-time clock of the digital display by the LTC input. It can easily build the clock system which is precision if it uses a generator for GPS rock as a master. The second pointer uses high intensity LED of the bar display and provides very high visibility. When it has a Free running mode, and LTC breaks off more than 1 second or is not input, it switches automatically.

"Indication"

The second pointer of AF136 uses high intensity LED of 3mm in diameter and shows high visibility even from the distance. It can recognize the second pointer by the bar indication that LED turns on consecutively every 1 second intuitively. It can switch it to 'dot display' when it continues pressing the knob for time setting more than 1 second. In addition, the decimal point of 1s indicates a lock in LTC and turns off the light in the Free running mode state. The display of the HS uses high intensity red LED of the 15mm size, and the visibility becomes very higher.

"Input"

It implements a connector of XLR and BNC and can be connected in balance or unbalance. Each connector is directly connected to and can input from either. The LTC input level supports in -20dBu to +15dBu, and a read rate is from single speed to 20 times speed by signal quality. The frame rate supports to 24, 25, 29.97, 30.

"Setting"

It can fix it by desktop or attached metal fittings in a ceiling, a wall surface. It hangs it on a hook (wood screws) in a wall surface and can fix it. When it fixes it on a ceiling, a continuation variable of 30 degrees is possible downward. It can change

it by a 30 degrees step at the position of the others. It can fix it on a 1 U rack mount panel if it makes fittings a course at 3:00.

"Adjustment"

It is in the program mode when it presses the knob for time setting of the front panel top right corner in a Free running mode. It turns a knob and sets HMS in turn. In addition, even an encoder of the remote is settable.



"Real-time clock model"

When LTC is not input, the AF136-1 switches to built-in RTC. Battery back up of around 1 week is possible.

"Others"

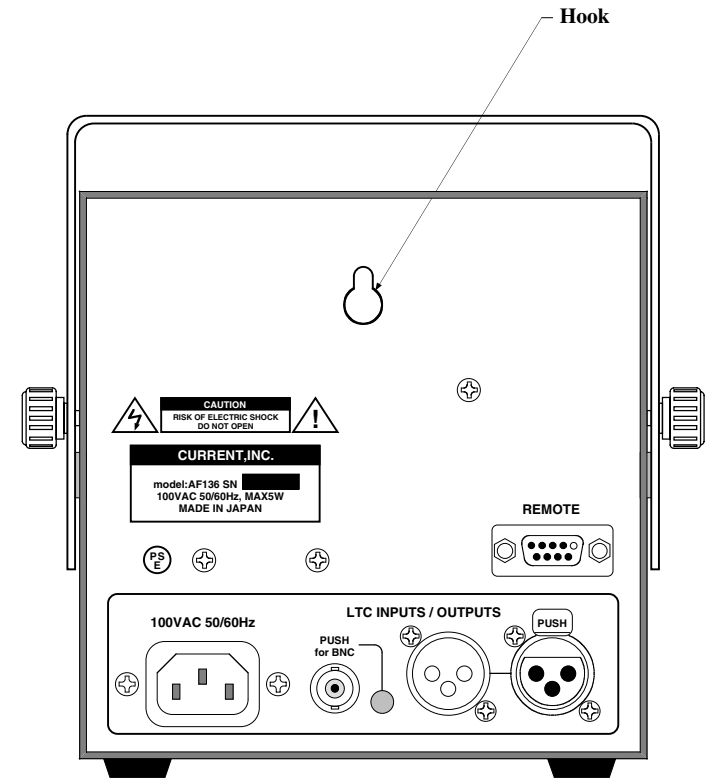
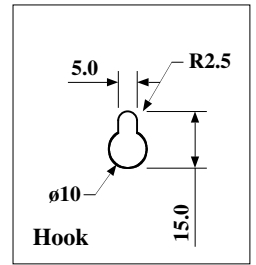
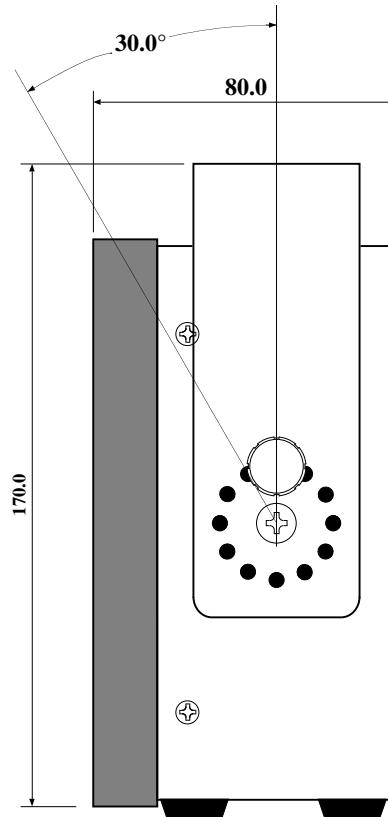
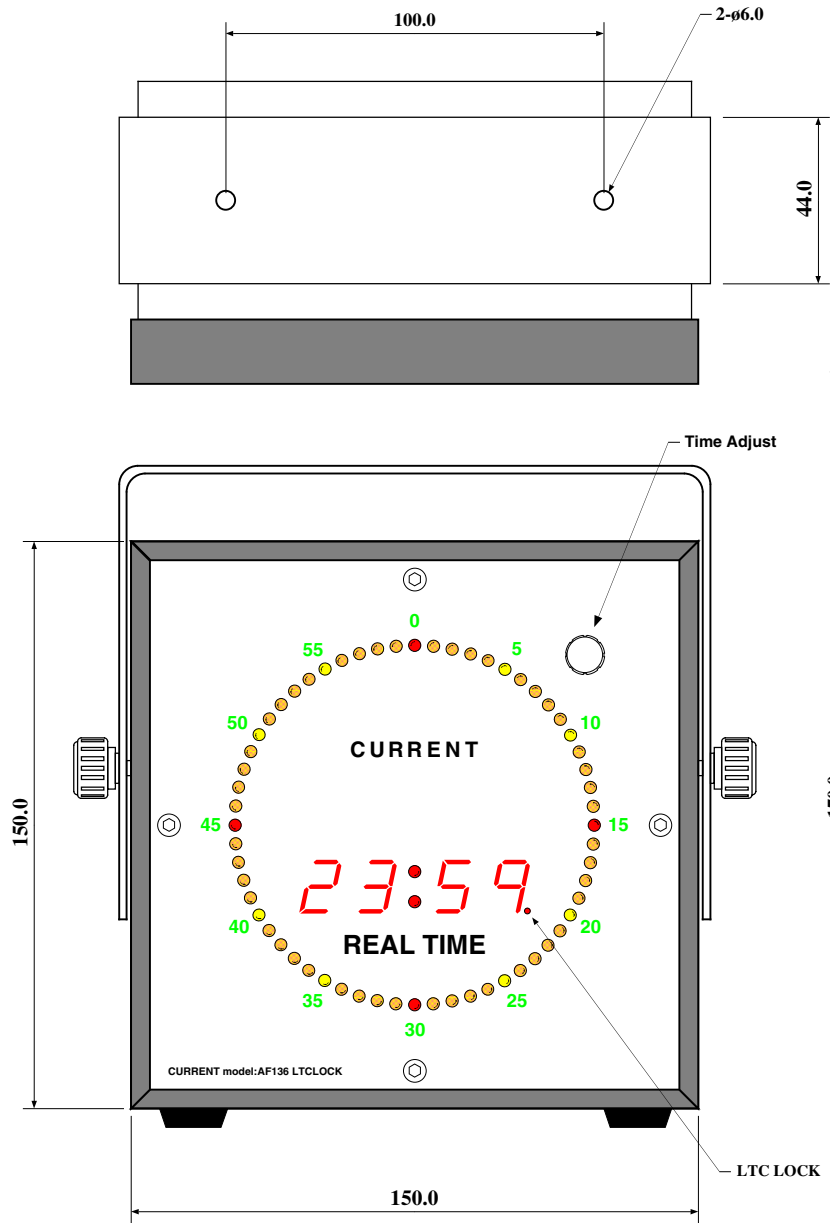
The logo case is possible with an option, too.

SPECIFICATIONS

- INPUT: XLR3-F, BNC
- THRU OUTPUT: XLR3-M, BNC
- FRAME RATE: 24, 25, 29.97, 30Hz
- SMPTE RATE: x1 to x20
- INPUT LEVEL: -20 to +15dBu
- REMOTE: Dsub9-F (#40-40)
- MAINS: 100VAC 50/60Hz MAX10W
- DIMENSIONS: 150Wx150Hx80D, 1kg

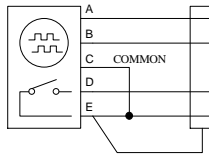
LTC clock	AF136	¥398,000
With real time clock	AF136-1	¥480,000
19" mount panel		¥64,000
custom silk print		¥58,000
accessory : AC cable		

The specifications are subject to change without notice.
 2-26-11 AKATSUTSUMI, SETAGAYA-KU, TOKYO, 156-0044 JAPAN



(c)CURRENT,INC.	AF136 LTCLOCK	Apr.2007
H.ICHIHASHI	PANEL DIAGRAM	Oct.2003
		AF136-D

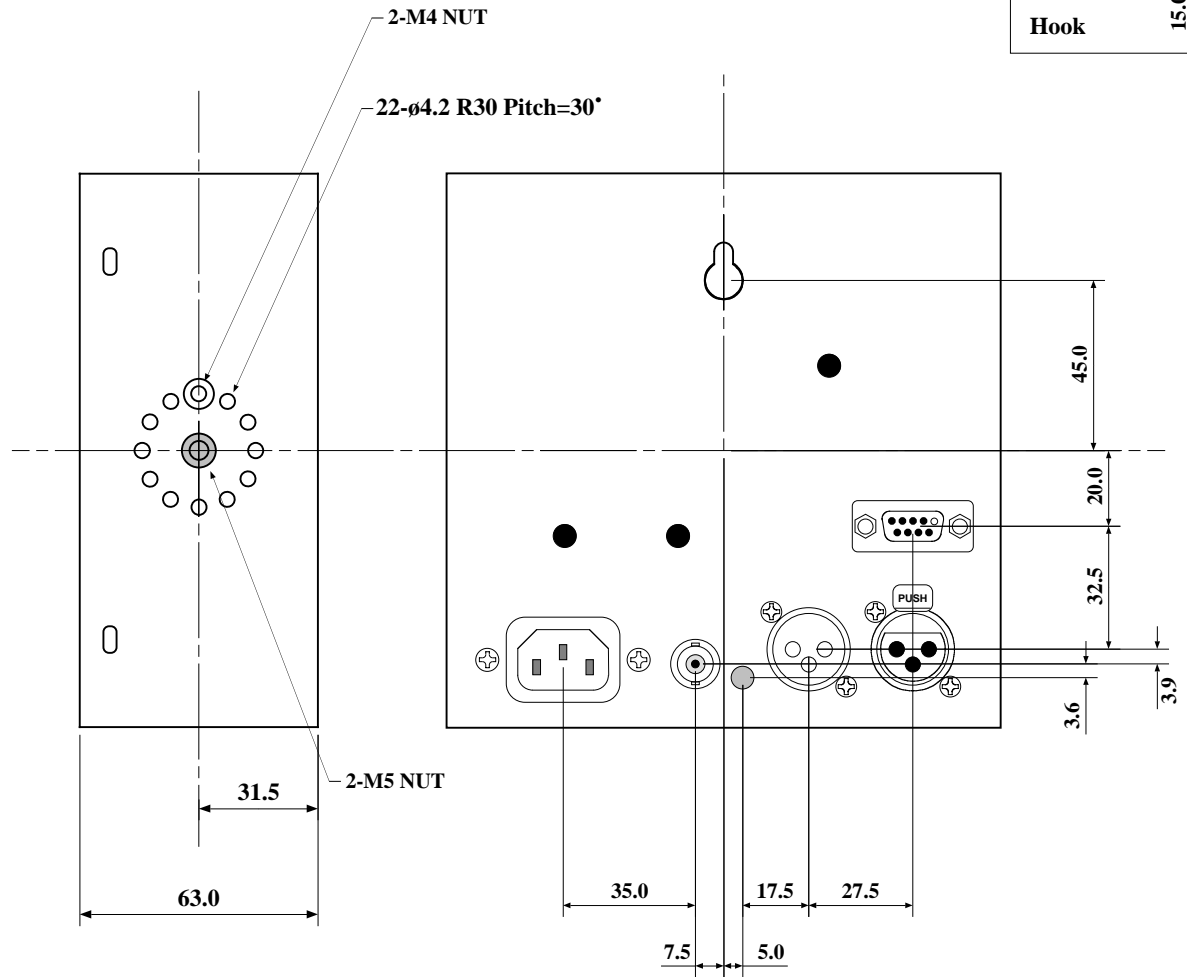
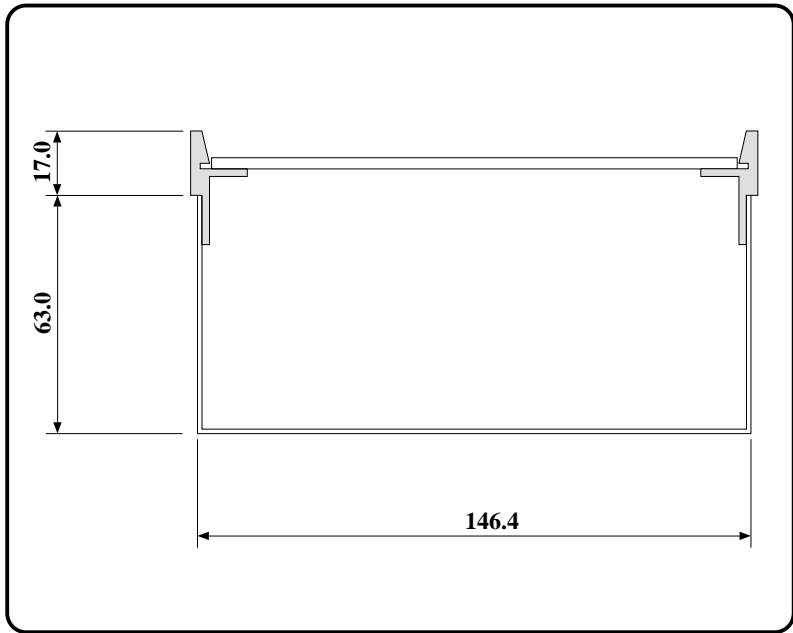
REMOTE ENCODER



REMOTE PORT

RB	HD	Signal
1	1	
2	6	
3	2	ENC-A
4	7	ENC-B
5	3	ENC-SW
6	8	
7	4	+5V
8	9	
9	5	GND

DSUB9-F #4-40



(C)CURRENT,INC.	AF136 LTCLOCK	apr.2006
H.ICHIHASHI	Rear panel and Side panel	AF136-mountdetail