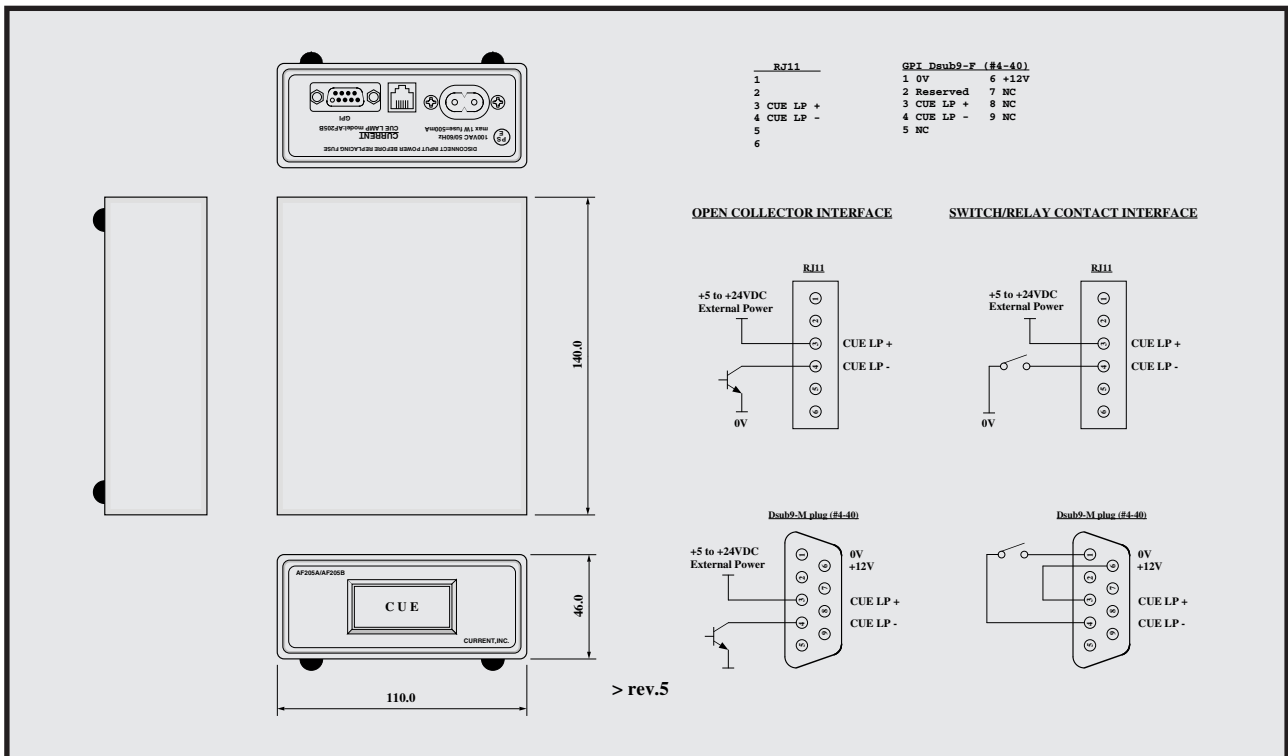


CURRENT PRODUCTS model:AF205B rev.5

CUE LAMP with PSU



Cue lamp box
Tarry display of every kind
High intensity LED
Power supply built-in
Contact and tarry
Compact

AF205B is cue lamp box of power supply built-in available alone. It can be driven with the tarry voltage with switch contacts such as cough box, open collector. Compact size allows setting at position that it is easy to see.

"CUE"

CUE lamp emits light in super red with high visibility. In addition, change of name is applicable for other purposes because it is easily possible by changing film.

"Connection"

When it does not use it in AC power, it is connected with modular jack same as AF205A. Input voltage supports in 5 to 24VDC, and cable can use even cross by straight because polarity does not matter. In addition, it can use commercial product for modular cable. It can connect contact of external equipment, open collector, the tarry voltage by using Dsub9 pin connector when it uses it in AC power. When it is connected by open collector method, it can connect Dsub9 pin to modular simultaneously.

"Cascade"

~~When it has connected control signal to Dsub9 pin of AF205B, it connects AF205A to modular jack as the second unit CUE lamp and can use it.~~
rev.5 moduler connector only input function.

"Others"

Please consider in addition in AF205A which can be directly connected in AF124 and AF224 of cough box, AF206 of top surface display. In addition, please refer about manufacturing of larger type and multiple display types.

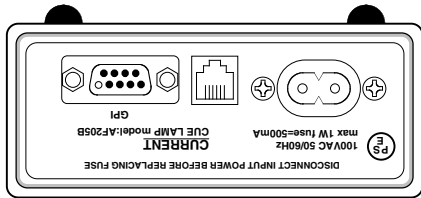
RJ11	GPI Dsub9-F (#4-40)
1 NC	1 0V 6 +15V
2 NC	2 Reserved 7 NC
3 CUE LP +	3 CUE LP + 8 NC
4 CUE LP -	4 CUE LP - 9 NC
5 NC	5 NC
6 NC	



SPECIFICATIONS

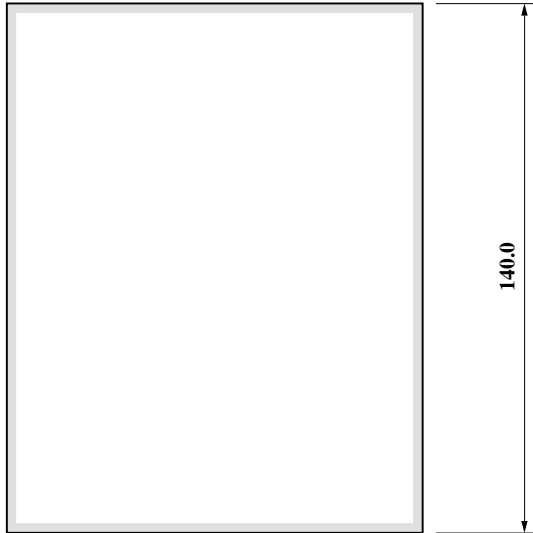
- CONNECTOR: RJ11 modular jack
- CUE COLOR: SUPER RED
- CUE VOLTAGE: 5 to 24VAC/DC, 10mA, without polarity
- GPI CONNECTOR: Dsub9-F (#4-40)
- MAINS: 100VAC 50/60Hz MAX 0.5W
- DIMENSIONS: 110Wx46Hx140D, 0.5kg

CUE Lamp	AF205B	¥64,000
	accessory : AC cable	



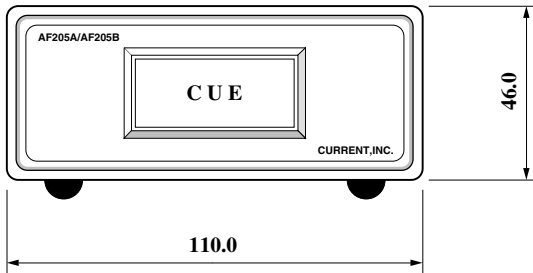
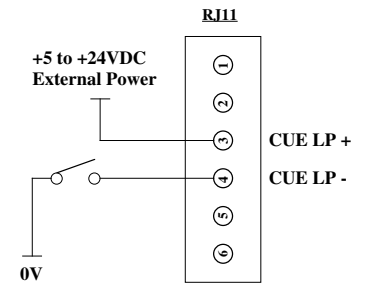
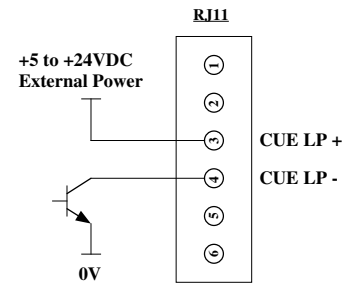
RJ11	
1	
2	
3	CUE LP +
4	CUE LP -
5	
6	

GPI Dsub9-F (#4-40)		
1	0V	6 +12V
2	Reserved	7 NC
3	CUE LP +	8 NC
4	CUE LP -	9 NC
5	NC	



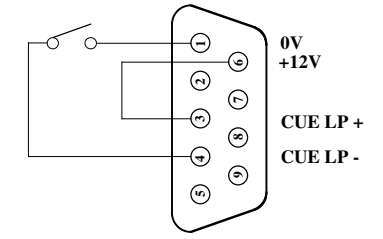
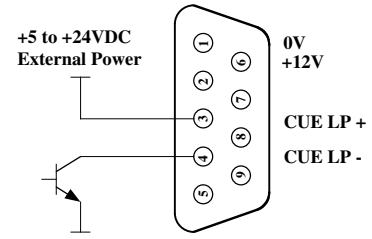
OPEN COLLECTOR INTERFACE

SWITCH/RELAY CONTACT INTERFACE



Dsub9-M plug (#4-40)

Dsub9-M plug (#4-40)



> rev.5

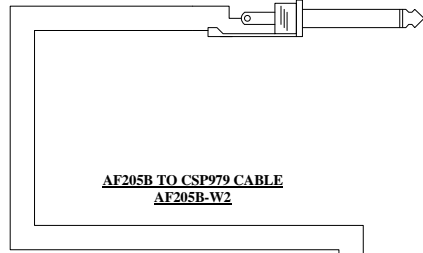
LED:HL-W07CK4K21

(c)CURRENT,INC.	AF205B CUE LAMP	Jan.2018
H.ICHIHASHI	PANEL DIAGRAM	Apr.2013
		AF205B-D2018 rev5

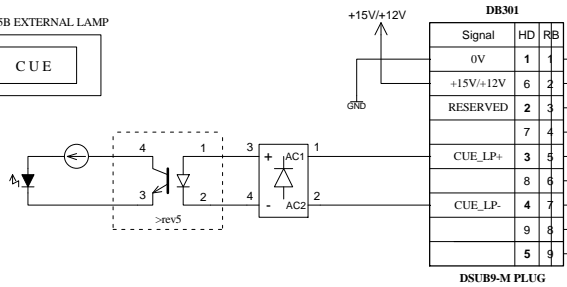
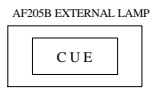
TALKBACK SYSTEM



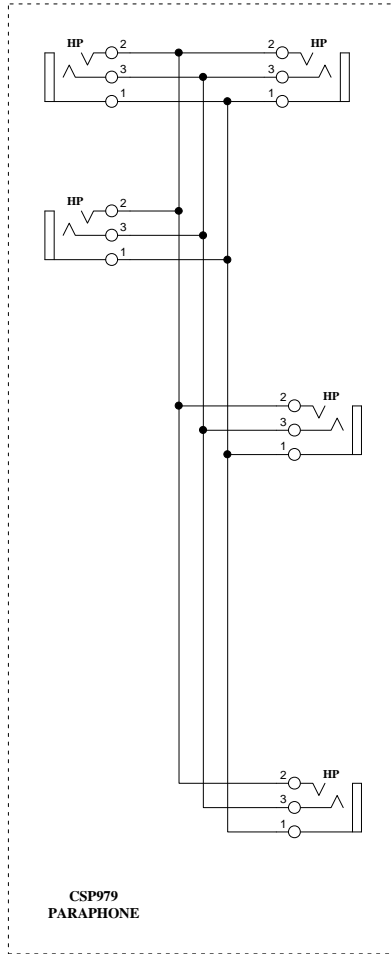
**AF205B TO CSP979 CABLE
AF205B-W2**



**AF205B
GM PORT**



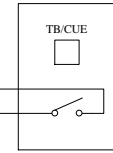
>rev5



TB962

RB	HD	Signal
1	1	
2	6	
3	2	LP COM
4	7	SW COM
5	3	TB SW
6	8	TB LP
7	4	CUE SW
8	9	CUE LP
9	5	

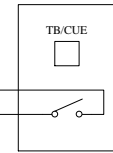
DSUB9-M PLUG



TB962

RB	HD	Signal
1	1	
2	6	
3	2	LP COM
4	7	SW COM
5	3	TB SW
6	8	TB LP
7	4	CUE SW
8	9	CUE LP
9	5	

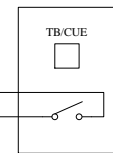
DSUB9-M PLUG



TB962

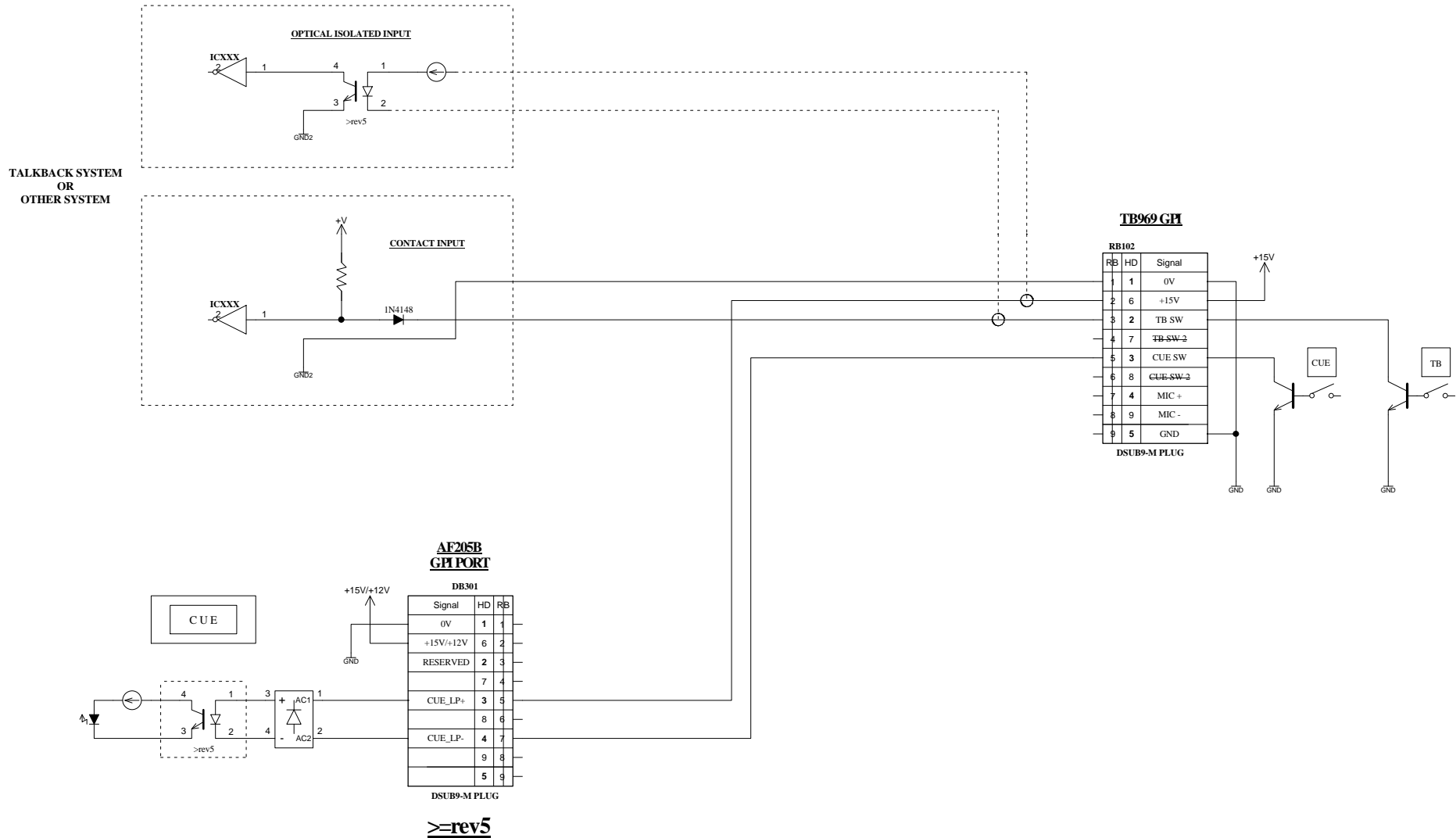
RB	HD	Signal
1	1	
2	6	
3	2	LP COM
4	7	SW COM
5	3	TB SW
6	8	TB LP
7	4	CUE SW
8	9	CUE LP
9	5	

DSUB9-M PLUG



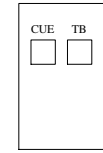
AF205B with CSP979

(c)CURRENT,INC.	AF205B	APR.2019
H.ICHIHASHI	APPLICATION	1 OF 1



AF205B with TB969

(c)CURRENT,INC.	AF205B	JUL.2020
H.ICHIHASHI	APPLICATION	1 OF 1



TB962

RB	HD	Signal
1	1	
2	6	
3	2	LP COM
4	7	SW COM
5	3	TB SW
6	8	TB LP
7	4	CUE SW
8	9	CUE LP
9	5	

DSUB9-M PLUG

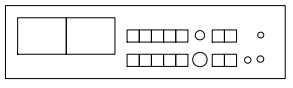
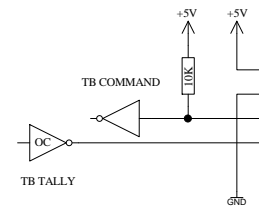
ZENER
10V
IF +12V VERSION
6V8 or 7V5

**CSP349
TB961 PORT**

DB401

Signal	HD	RB
SCOPE L	1	1
SCOPE R	9	2
LP COMMON	2	3
SW COMMON	10	4
TB SW	3	5
TB LP	11	6
AUTO CUE SW	4	7
AUTO CUE LP	12	8
RTB SW	5	9
RTB LP	13	10
SIDE SW	6	11
SIDE LP	14	12
MIC +5V	7	13
MIC SIG	15	14
MIC GND	8	15

DSUB15-M PLUG



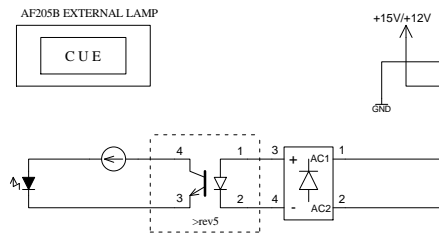
**AF205B
GPU PORT**

DB301

Signal	HD	RB
0V	1	1
+15V/+12V	6	2
RESERVED	2	3
	7	4
CUE_LP+	3	5
	8	6
CUE_LP-	4	7
	9	8
	5	9

DSUB9-M PLUG

>=rev5

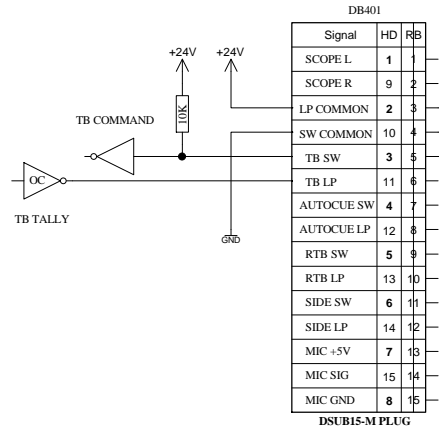


AF205B with TB962

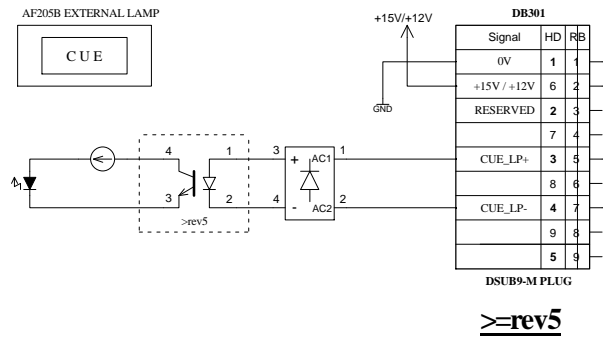
(c)CURRENT,INC.	AF205B	JAN.2018
H.ICHIHASHI	APPLICATION	1 OF 1

TALKBACK SYSTEM LOGIC VOLTAGE MORE THAN AF205B

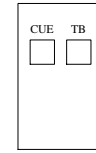
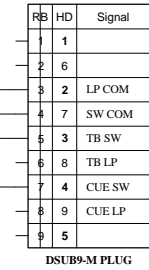
TALKBACKSYSTEM



AF205B GH PORT



TB962

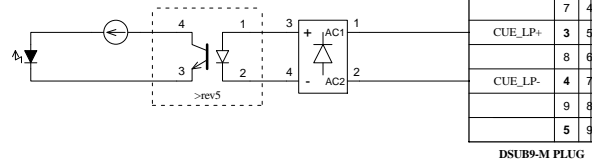


1S1588/1N4148
OR
EQUIVLENT

AF205B with TB962

(c)CURRENT,INC.	AF205B	JAN.2018
H.ICHIHASHI	APPLICATION	1 OF 1

AF205B EXTERNAL LAMP



**AF205B
GPI PORT**

Signal	HD	RB
0V	1	1
+15V/+12V	6	2
RESERVED	2	3
	7	4
CUE_LP+	3	5
	8	6
CUE_LP-	4	7
	9	8
	5	9

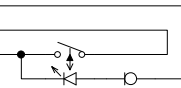
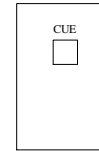
DSUB9-M PLUG

>=rev5

TB962

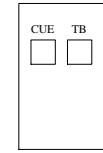
RB	HD	Signal
1	1	
2	6	
3	2	LP COM
4	7	SW COM
5	3	TB SW
6	8	TB LP
7	4	CUE SW
8	9	CUE LP
9	5	

DSUB9-M PLUG



AF205B with TB962

(c)CURRENT,INC.	AF205B	APR.2021
H.ICHIMASHI	APPLICATION	JAN.2018
		1 OF 1



TB962

RB	HD	Signal
1	1	
2	6	
3	2	LP COM
4	7	SW COM
5	3	TB SW
6	8	TB LP
7	4	CUE SW
8	9	CUE LP
9	5	

DSUB9-M PLUG

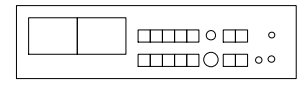
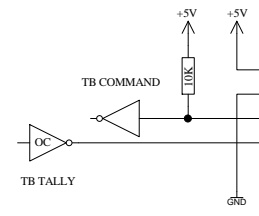
ZENER
6V8 or 7V5

**CSP349
TB961 PORT**

DB401

Signal	HD	RB
SCOPE L	1	1
SCOPE R	9	2
LP COMMON	2	3
SW COMMON	10	4
TB SW	3	5
TB LP	11	6
AUTO CUE SW	4	7
AUTO CUE LP	12	8
RTB SW	5	9
RTB LP	13	10
SIDE SW	6	11
SIDE LP	14	12
MIC +5V	7	13
MIC SIG	15	14
MIC GND	8	15

DSUB15-M PLUG

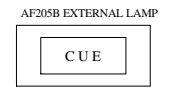
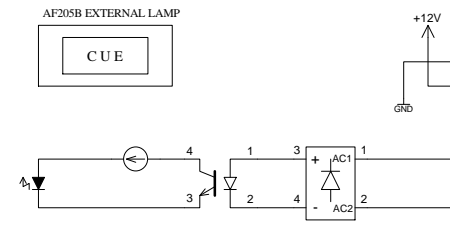


**AF205B
GM PORT >=rev5**

DB301

Signal	HD	RB
0V	1	1
+12V	6	2
RESERVED	2	3
	7	4
CUE_LP+	3	5
	8	6
CUE_LP-	4	7
	9	8
	5	9

DSUB9-M PLUG



PCB REVISION 5.100.118

AF205B >=rev5 with TB962

(c)CURRENT,INC.	AF205B	JAN.2018
H.ICHIHASHI	APPLICATION	1 OF 1