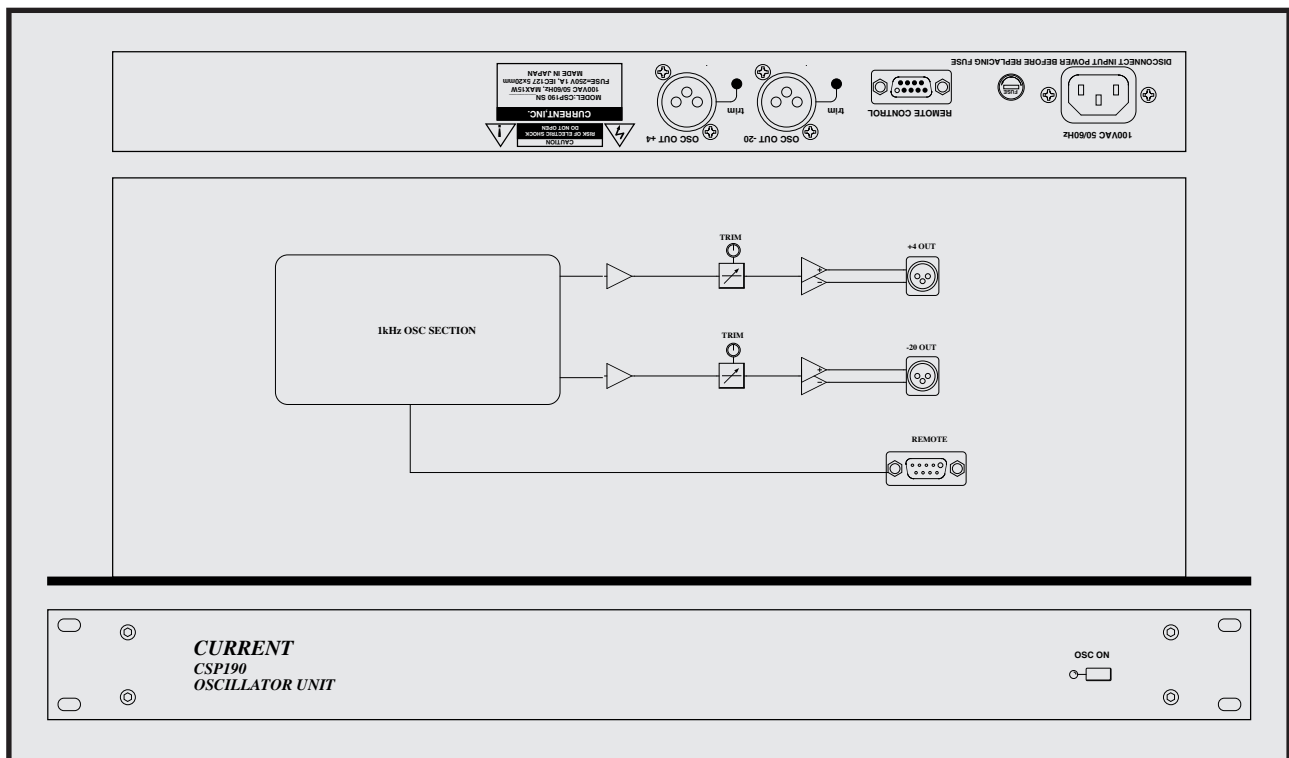


CURRENT PRODUCTS model:CSP190

OSC UNIT



Low distortion analog oscillator
1kHz, the +4/-20dBu output
Remote control possibility
19 inches 1U size

CSP190 is 19 inches 1U size and is low distortion analog oscillator with the output of dual of +4dBu and -20dBu. It is most suitable as oscillator for reference signals such as audio equipment or video equipment.

"Control"

It can do ON/OFF control of oscillator by switch of front panel or remote control. In addition, fine adjustment of output level is possible in trim of rear panel, too.

"Output level"

+4 output is variable possibility in trim of rear panel in the range of +4dBu from 0dBu. The -20dBu output is variable possibility in the range of about ± 6 dB. In addition, please execute setting of output level after warm-ups more than 30 minutes.

"Others"

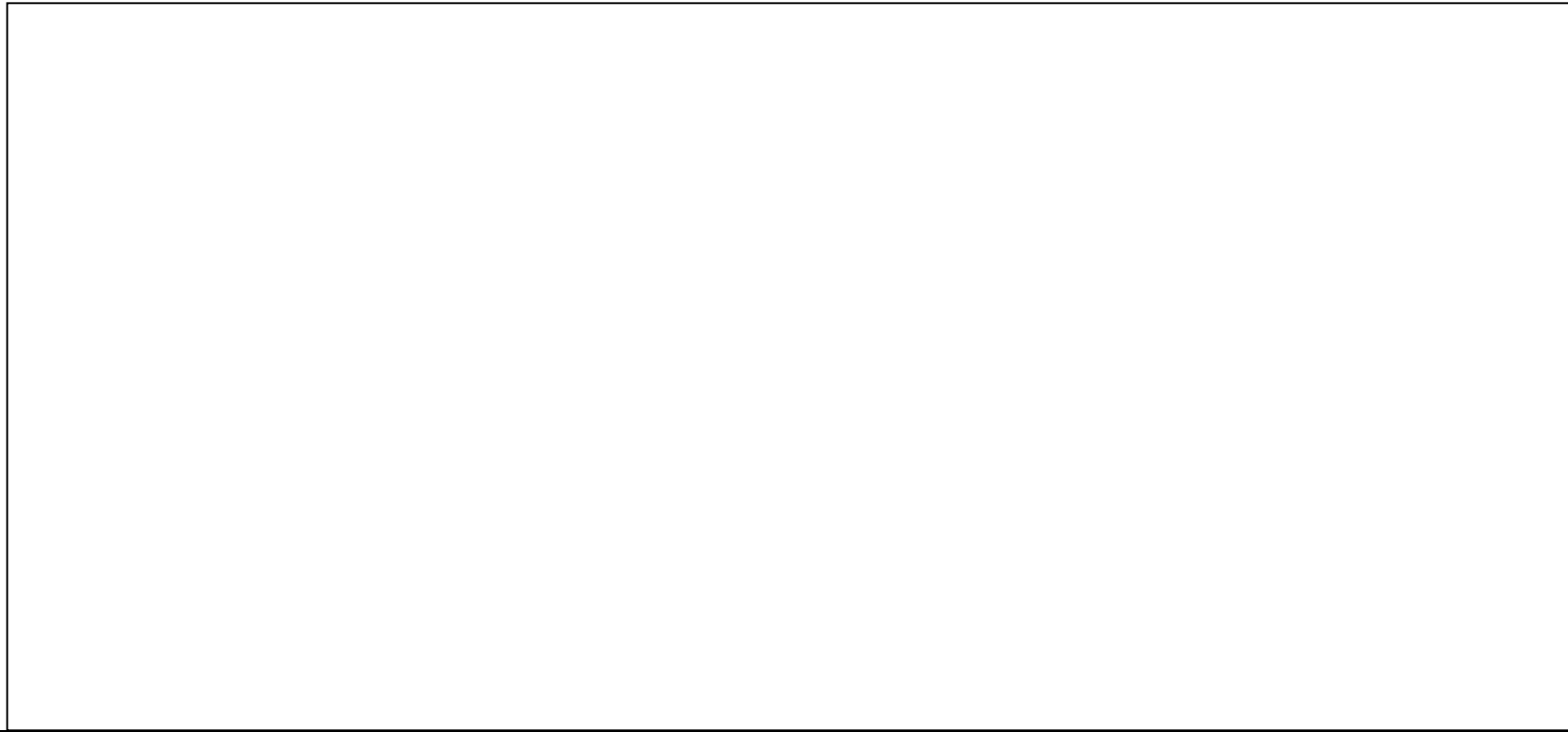
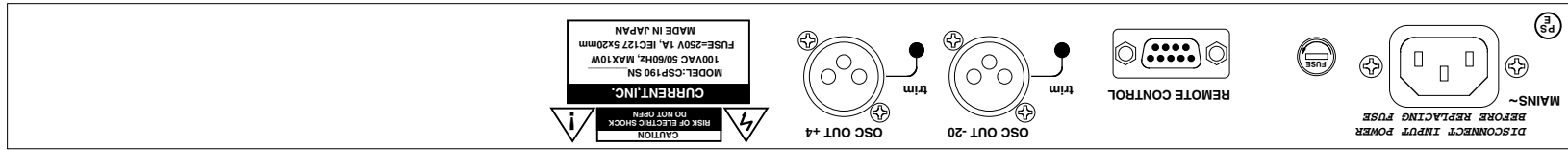
Please refer about change of standard frequency 1kHz.

SPECIFICATIONS

- 🍏 **OUTPUT SIGNAL:** 1kHz sine wave
- 🍏 **FREQUENCY DEVIATION:** $\pm 1\%$
- 🍏 **OUTPUT LEVEL:** +4dBu, -20dBu
- 🍏 **OUTPUTS:** 50 Ω BALANCED
- 🍏 **OUTPUTS CONNECTOR:** XLR3-M
- 🍏 **OUTPUT ADJUSTMENT:** ± 6 dB
- 🍏 **THD:** < 0.01% at 1kHz
- 🍏 **MAINS:** 100VAC 50/60Hz, MAX 10W
- 🍏 **DIMENSIONS:** 482Wx44Hx303D, 4kg

| | | |
|----------|--------|----------|
| OSC unit | CSP190 | ¥198,000 |
|----------|--------|----------|

accessory : AC cable,



302.6



44.0

482.0

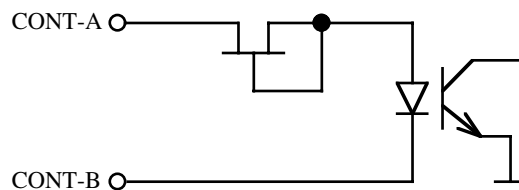
Jun.2007

| | | |
|--------------|------------------------|--------------|
| CURRENT,INC. | OSCILLATOR UNIT CSP190 | FEB. 97 |
| H.ICHIHASHI | PANEL DIAGRAM | CSP910-D2007 |

CSP190 "REMOTE" D9-F(#4-40) Connector Pin List

| Ribbon | Hard | Signal name | Designation | Active |
|--------|------|-------------|-----------------|--------|
| 1 | 1 | CONT-A | REMOTE SWITCH + | |
| 2 | 6 | | | |
| 3 | 2 | CONT-B | REMOTE SWITCH - | |
| 4 | 7 | | | |
| 5 | 3 | +15V | +15V SUPPLY | |
| 6 | 8 | | | |
| 7 | 4 | GND | +15V COMMON | |
| 8 | 9 | | | |
| 9 | 5 | | | |

入力回路



+ 5 V から + 2 4 V まで入力できます。

注意！ Dサブコネクタの接続はHARDピン番号で接続してください。

取付ビスは#4 - 40インチビスを使用して下さい

CAUTION! D-Connector for wiring refer toHard pin number Description.

Mounting screw for D-connector use #4-40 size.