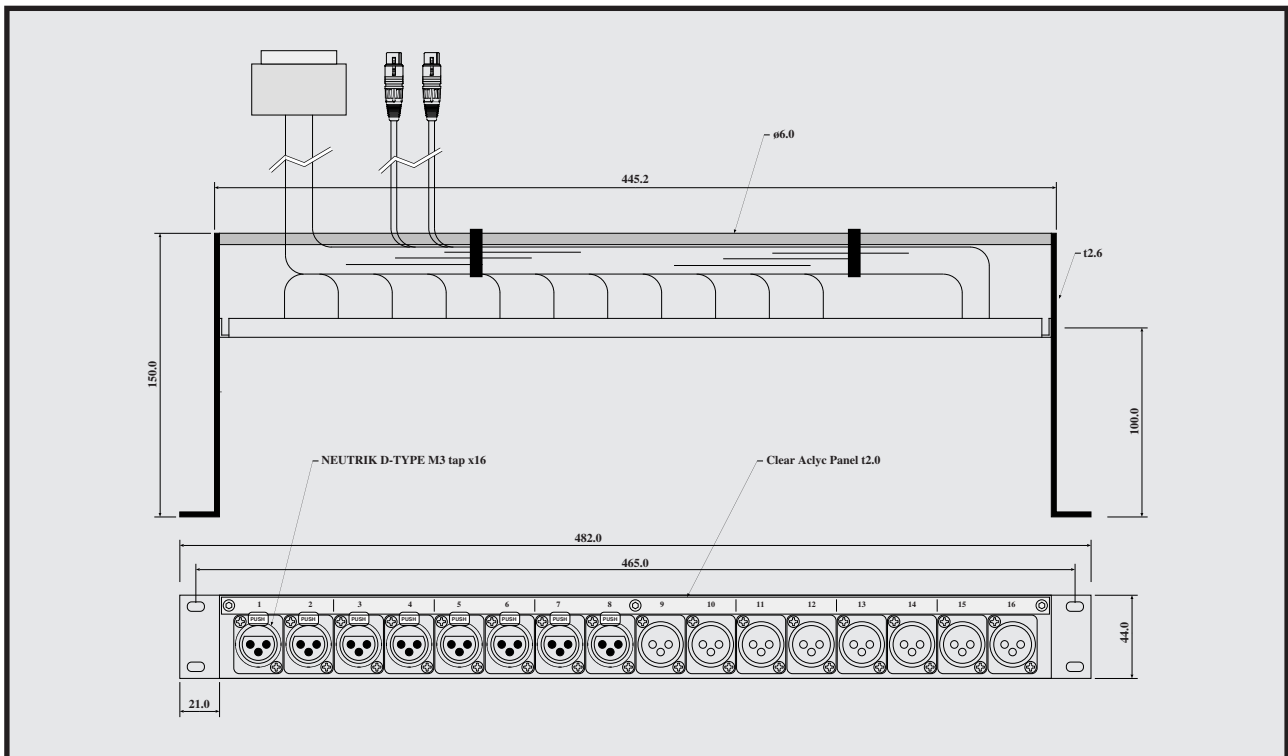


CURRENT PRODUCTS model:CSP904

CONNECTOR PANEL



16ch connector panel

It is compatible by neutrik D-type

100mm recession setting

Fixing Bar

CSP904 is 16ch connector panel for D-type XLR connectors of the neutrik.

Patch cable does not appear outside a rack by making 100mm recession setting.

"Assembling"

Please refer about assembling, the wiring to specifications.



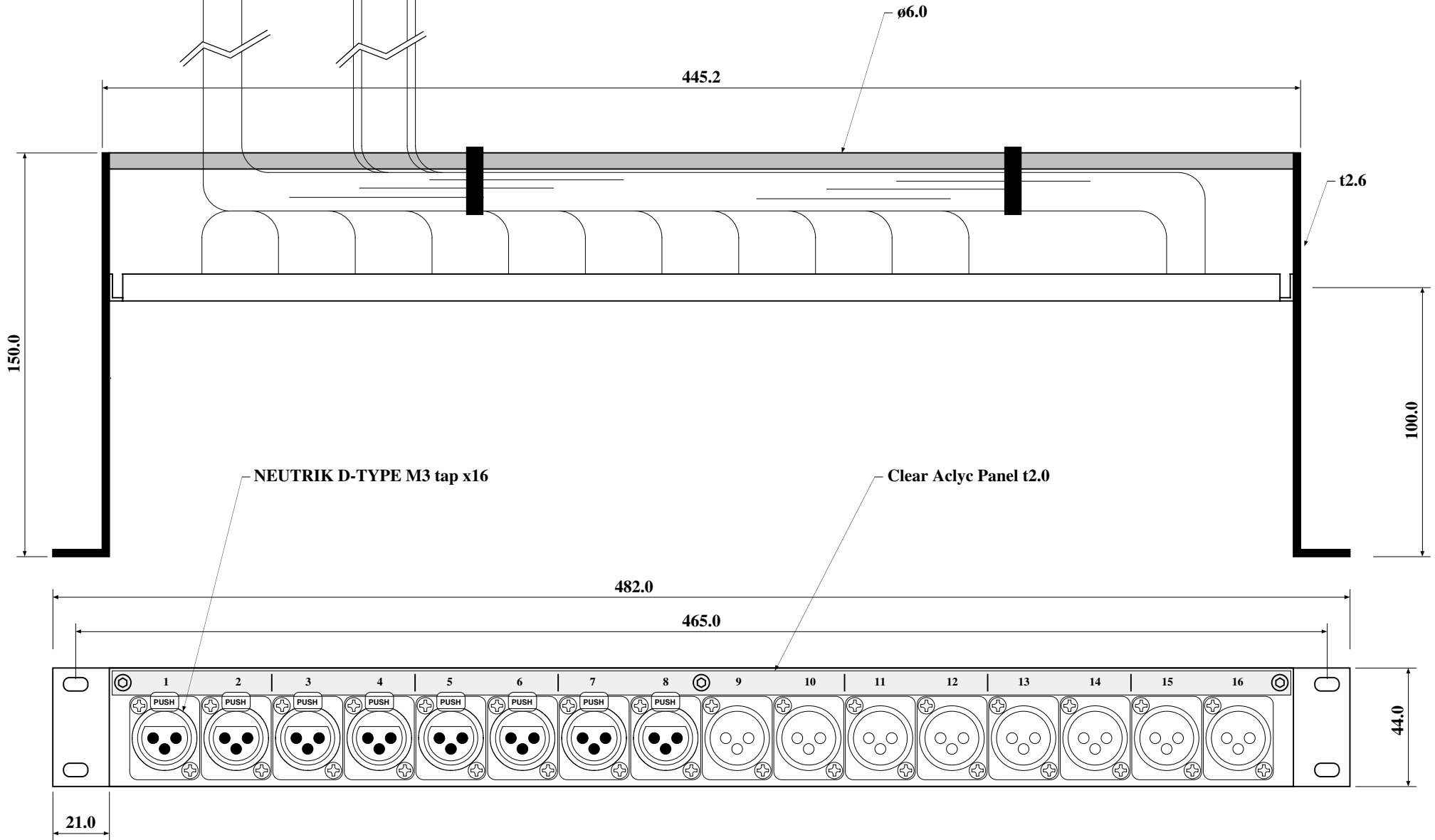
SPECIFICATIONS

🍏 **XLR CONNECTORS:** NEUTRIK D-type

🍏 **DIMENSIONS:** 482Wx44Hx150D 1Kg

| | | |
|------------------|--------|---------|
| Connector panel | CSP904 | ¥48,000 |
| accessory : None | | |

組み立て例です。(ケーブルコネクタは付属しません。)
 Assembly is an example. (Cable connectors are not included.)



| | | |
|-----------------|---------------------|----------|
| (c)CURRENT,INC. | CSP904 | Feb.2005 |
| H.ICHIHASHI | XLR CONNECTOR PANEL | CSP904-D |