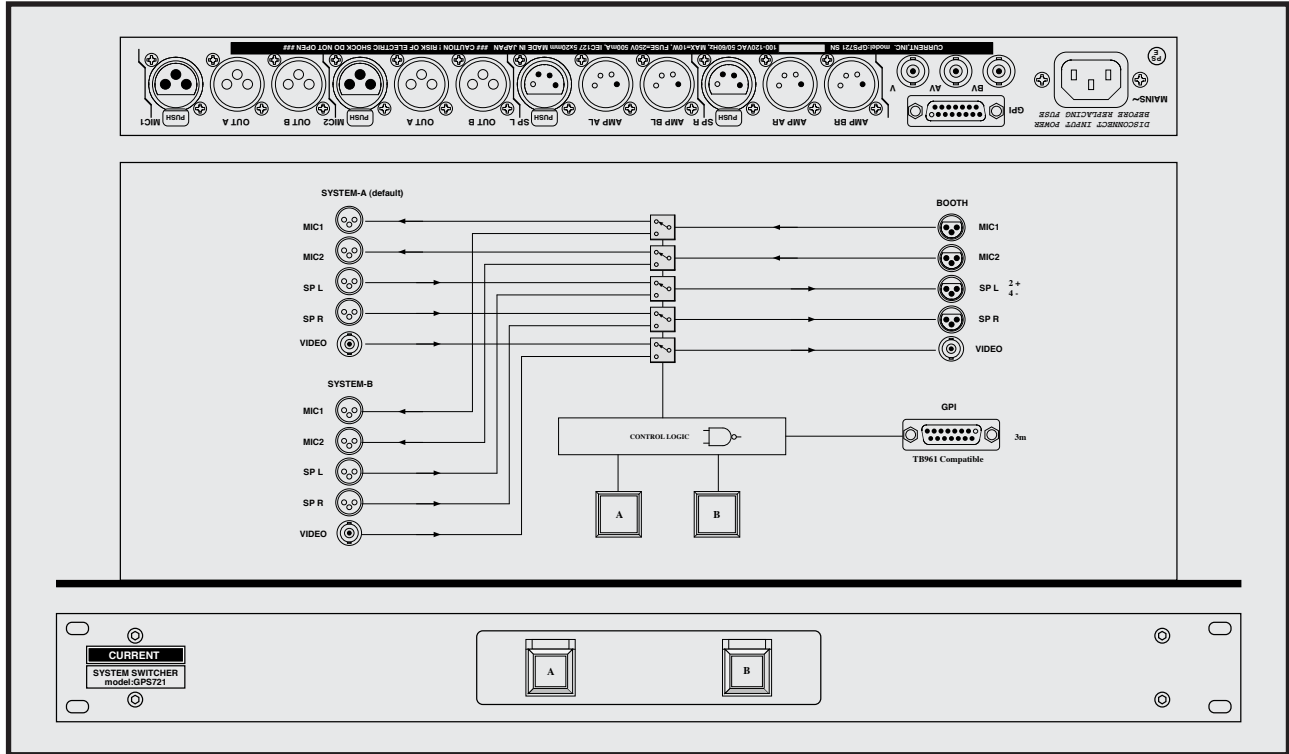


CURRENT PRODUCTS model:GPS721 SYSTEM SWITCHER



A 2:1 system switcher
 Audio 2ch, speaker 2ch, video 1ch
 An analog audio system, digital audio support
 Composite video support
 It is most suitable for share the announce booth
 Remote control is possible
 19 inches 1U

As for GPS721, 2chBNC is a system switcher 2ch, XLR4 XLR3 at 2:1 of 1ch.

System A is connected to even at the time of power interruption by using a relay to a switch element.

"Switching"

The signal switch over of GPS721 does not choose a model to be connected because it depends on a relay and a signal level. Because an A system is bypassed at the time of the power down, it is safe at the time of the emergency.

"Support Signal"

The XLR3 connector supports an analog audio system, digital audio and the microphone line. It is all pins change over and can use the XLR4 connector for the change of a DC power supply and the speaker. In addition, it can use the BNC connector for an analog audio system, digital audio, a word clock, a composite video.

"Termination"

150 ohm is loaded between hot and cold to the XLR3 connector which is not chosen. In BNC port 75Ω is loaded likewise. In addition, it can separate these with an internal switch.

"Control"

The control of GPS721 comes by parallel control via a GPI connector of the switch

of the front panel or the rear panel.

In addition, power "A" is automatically selected when the power is turned on and the cross-section.

"Others"

In addition, different specifications and system switchers, remote control panel, please contact us so we can manufacture boxes.

REMOTE DSUB15-F

01	09
02 LP COM +5V	10 SW COM 0V
03 SW 1	11 LP 1
04 SW 2	12 LP 2
05	13
06	14
07	15
08	

SPECIFICATIONS

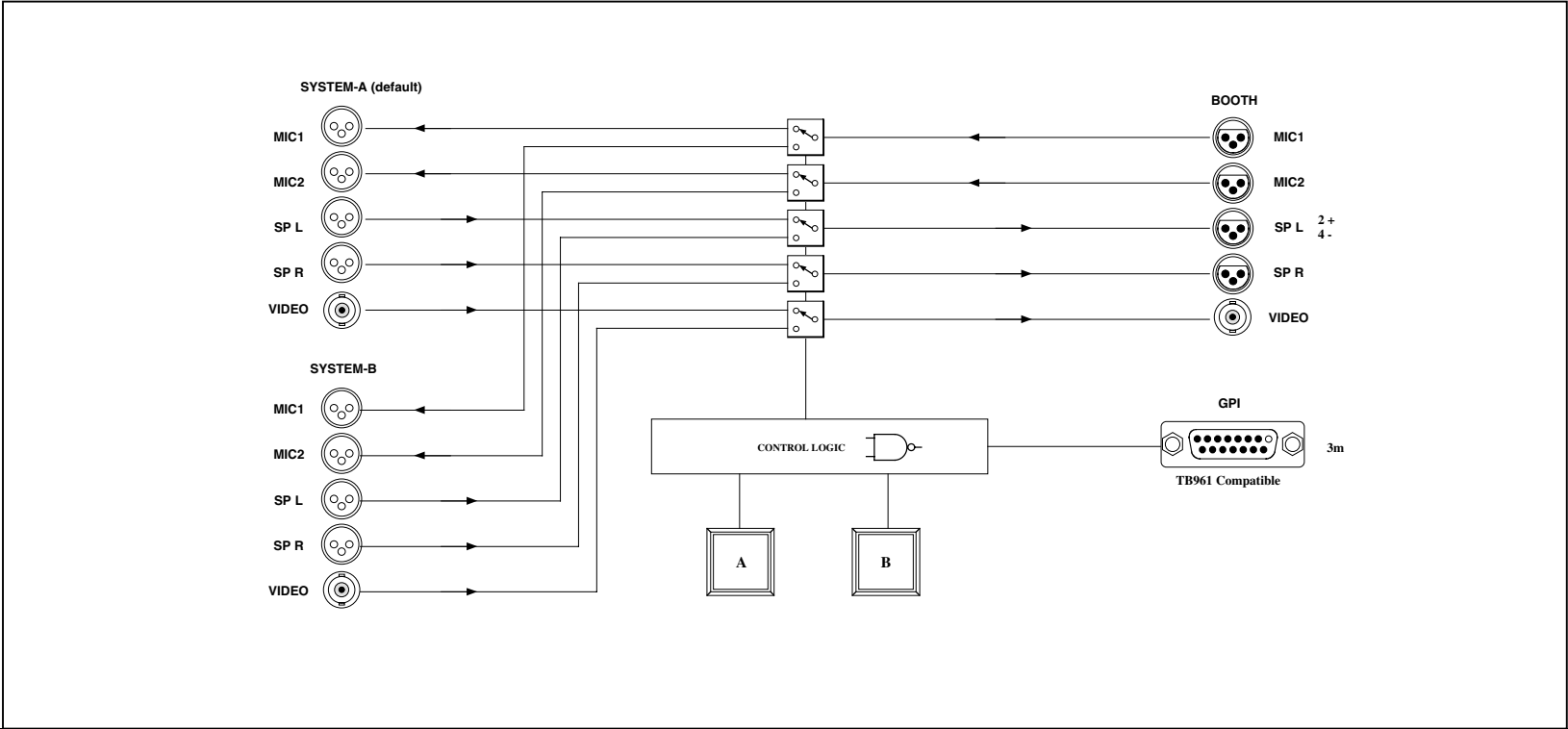
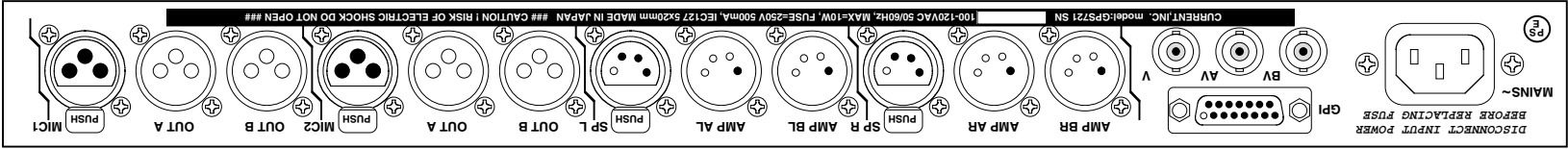
- ♣BALANCED INPUT: XLR3-F
- ♣BALANCED OUTPUTS A,B: XLR3-M
- ♣SPEAKER INPUTS A,B: XLR4-M max=AC/DC3A
- ♣SPEAKER SELECTED: XLR4-F max=AC/DC3A
- ♣UNBALANCED INPUTS A,B: BNC
- ♣UNBALANCED SELECTED: BNC
- ♣CONTROL: FRONT PANEL, GPI (Dsub9-F #4-40)
- ♣SWITCHING ELEMENT: RELAY
- ♣MAINS: 100-120VAC 50/60Hz MAX=10W
- ♣DIMENSIONS: 482Wx44Hx303D 4kg



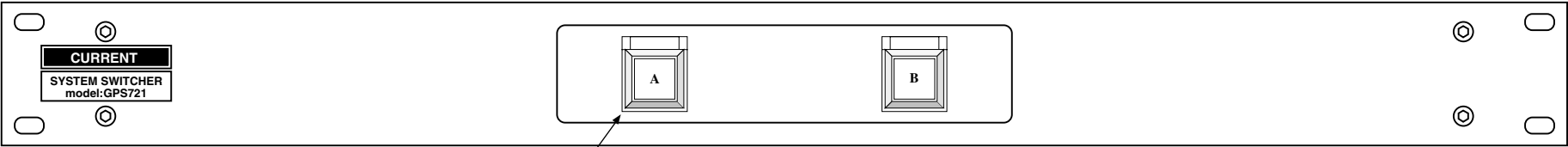
System switcher	GPS721	¥480,000
Remote box	TB961	¥64,000
Remote cable 5m	TB961W	¥32,000
accessory : AC cable		

The specifications are subject to change without notice.
 2-26-11 AKATSUTSUMI, SETAGAYA-KU, TOKYO, 156-0044 JAPAN

MONITOR SYSTEM
 HEADPHONES AMP
 CUE SYSTEM
 COMMUNICATION
 TB_COUGH SYSTEM
 MATRIX AMP
 AUDIO ROUTER
 AUDIO VIDEO
 SWITCHER
 SYSTEM SWITCHER
 EMERGENCY
 AUDIO VIDEO
 DISTRIBUTOR
 METER SYSTEM
 ANALOG, DIGITAL
 PREAMP MIXER
 LEVEL UNIT
 DIGITAL AUDIO
 FADER UNIT
 AUTO FADER
 TALLY FADER
 CLOCK TIMER
 EVENT SYSTEM
 SPECIAL PRODUCTS
 ETC.



302.6

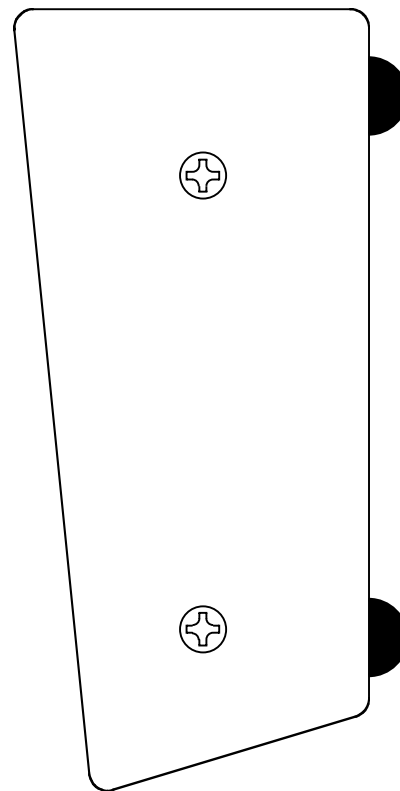
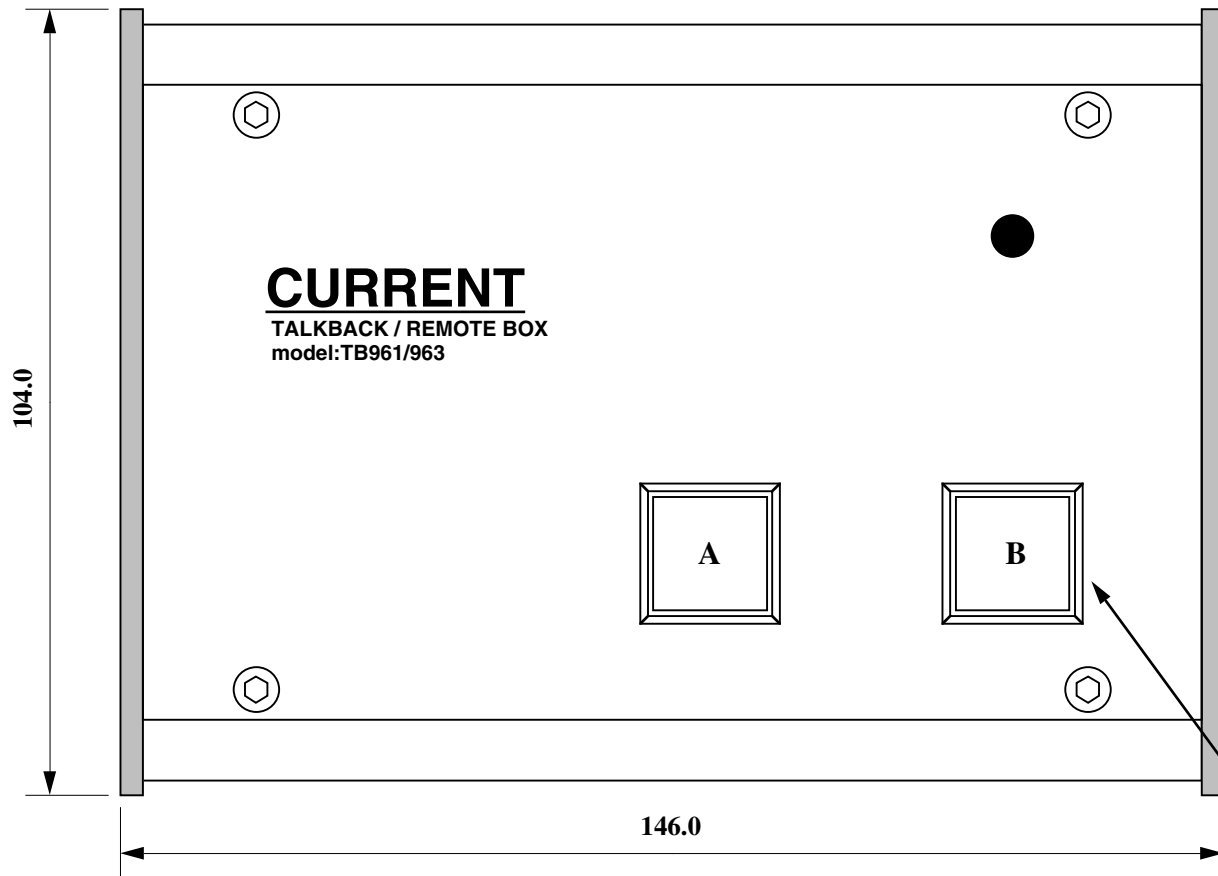
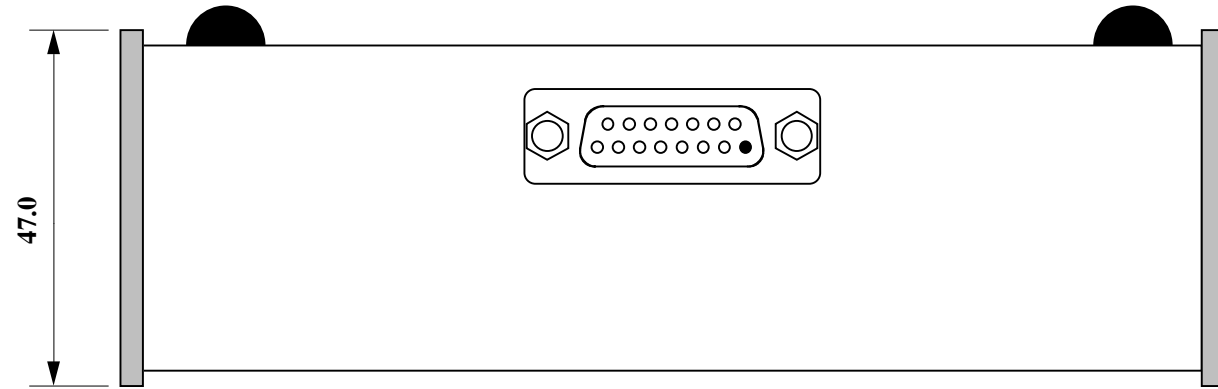


44.0

482.0

with Guard Cover

©CURRENT, INC.	GPS721 SYSTEM SWITCHER	May.2006
H.ICHIMASHI	PANEL DIAGRAM	GPS721-D



May.2006

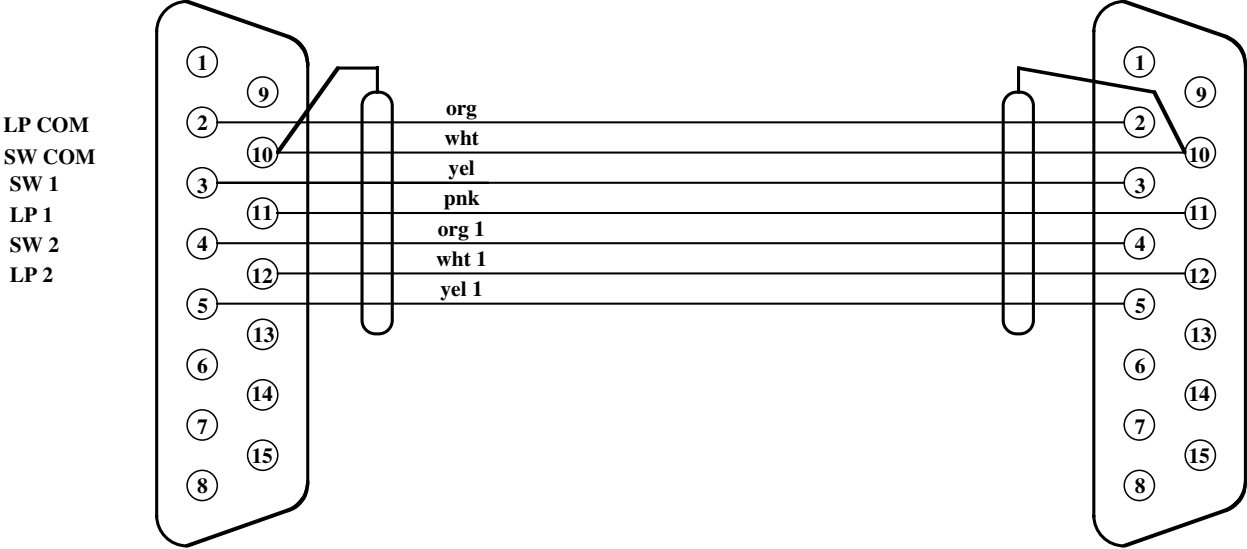
CONNECTOR:D15-M(#4-40)

(c)CURRENT,INC.	GPS721 REMOTE BOX TB961-24	JUL.95
H.ICHIHASHI	PANEL DIAGRAM	TB961-24D

GPS721 - TB961-24 CABLE

GPS721 Remote Port
Dsub15-M #4-40 screw

TB961-24 Remote Box
Dsub15-F #4-40 screw



CABLE : MOGAMI 2861 7way
3m

(c)CURRENT,INC.	GPS721	Jun.2006
H.ICHIHASHI	REMOTE CABLE	GPS721 RemoteCable

GPS721 "REMOTE" D15-F(#4-40)Connector Pin List

Ribbon	Hard	Signal name	Designation	Active
1	1	0V	SWITCHES COMMON	GND
2	9	+5V	LAMPS COMMON	+5V
3	2	SW2	SYSTEM SELECT SWITCH B	Lo
4	10	LP2	SYSTEM SELECT LAMP B	Lo
5	3	SW1	SYSTEM SELECT SWICH A	Lo
6	11	LP1	SYSTEM SELECT LAMP A	Lo
7	4			
8	12			
9	5			
10	13			
11	6			
12	14			
13	7			
14	15			
15	8			

注意！ Dサブコネクタの接続はHARDピン番号で接続してください。取付は#4-40インチビスです。

CAUTION! D-Connector for wiring refer toHard pin number Description. Mounting screw for D-connector use #4-40 size.