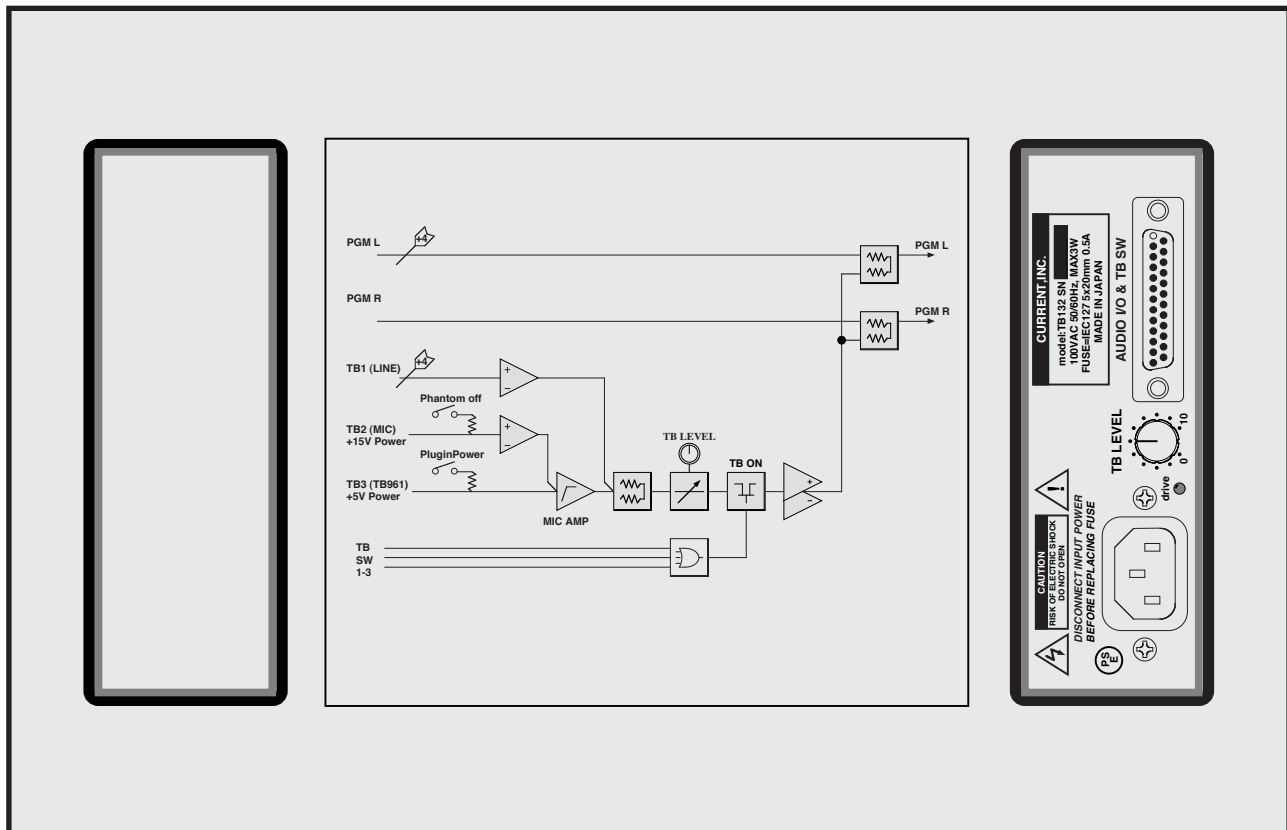


CURRENT PRODUCTS model:TB132

TBMIX



Mixed TB by the stereo line
 Supports 3 kinds of TB signal forms
 3 TB switch connection is possible
 Dynamic, condenser microphone support
 Plug in power support
 Microphone compressor built-in, Compact

TB132 is the talkback mix unit that can cut in on the stereo program line with a TB signal. It supports 3 kinds of the line signal of the reference level same as a program to a TB source, general dynamic and a condenser microphone and the electret condenser microphone.

"Input and output"

All audio signal and TB switch input are gathered by one Dsub25-F connector. In addition, in the case of 600 ohms, 6dB damps load impedance because a program and the TB signal are mixed by resistance of about 600 ohms.

"TB source"

It can use a line, dynamic or a condenser microphone, 3 kinds of TB sources of the electret condenser microphone simultaneously. A power supply of +15V is supplied on a condenser microphone terminal. A power supply of +5V is supplied for electret condenser microphones again (it can turn it off with inside switch.). In addition, it can supply power for the microphone plug in power by switching the internal switch.

"Control"

It can connect 3 TB switches to TB132. In addition, it can set the mixture level of the TB with a knob of the Dsub connector side.

"Others"

It can connect TB961 to a TB box.

Also, please contact us so we can also manufacture according to the application connection cable.

AUDIO I/O DSUB25-F (#4-40)	
01 PGM in L+	14 PGM in L-
02 PGM in L GND	15 PGM in R+
03 PGM in R-	16 PGM in R GND
04 PGM out L+	17 PGM out L-
05 PGM out L GND	18 PGM out R+
06 PGM out R-	19 PGM out R GND
07 TB1 +	20 TB1 -
08 TB1 GND	21 TB2 +
09 TB2 -	22 TB2 GND
10 TB3 +	23 TB3 -
11 TB3 GND	24 TB SW 1
12 TB SW 2	25 TB SW 3
13 TB SW common	

SPECIFICATIONS

- 🍏 PROGRAM INPUTS: BALANCED 600Ω, ref=+4dBu, max=+24dBu
- 🍏 PROGRAM OUTPUTS: BALANCED 600Ω, ref=+4dBu, max=+24dBu
- 🍏 TB LINE INPUT: BALANCED 13kΩ, ref=+4dBu, max=+20dBu
- 🍏 TB MIC INPUT: BALANCED 4kΩ, ref=-40dBu, mic power=+15V
- 🍏 TB ECM INPUT: UNBALANCED 13kΩ, ref=-40dBu, mic power=+5V
- 🍏 CONTROL: TB SWITCH x3
- 🍏 CONNECTOR: Dsub25-F(#4-40)
- 🍏 MAINS: 100-120VAC 50/60Hz MAX=3W
- 🍏 DIMENSIONS: 150Wx54Hx170D 1kg

TB mix	TB132	¥100,000
TB box	TB961	¥64,000
TB cable 5m	TB961W	¥32,000
accessory : None		

TB132 TB MIX System

SC6014 CUE SYSTEM

3系統のTB信号と3つのTBスイッチを同時使用できます。

プログラム

Console, Editor, DAW etc.



プログラム+TB

TB (ラインレベル)

TBスイッチ

AF205A CUE LAMP

プログラム+TB



Mic



TB961/G Talkback Box

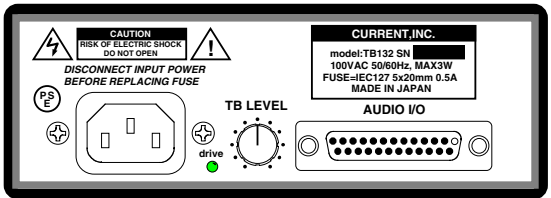
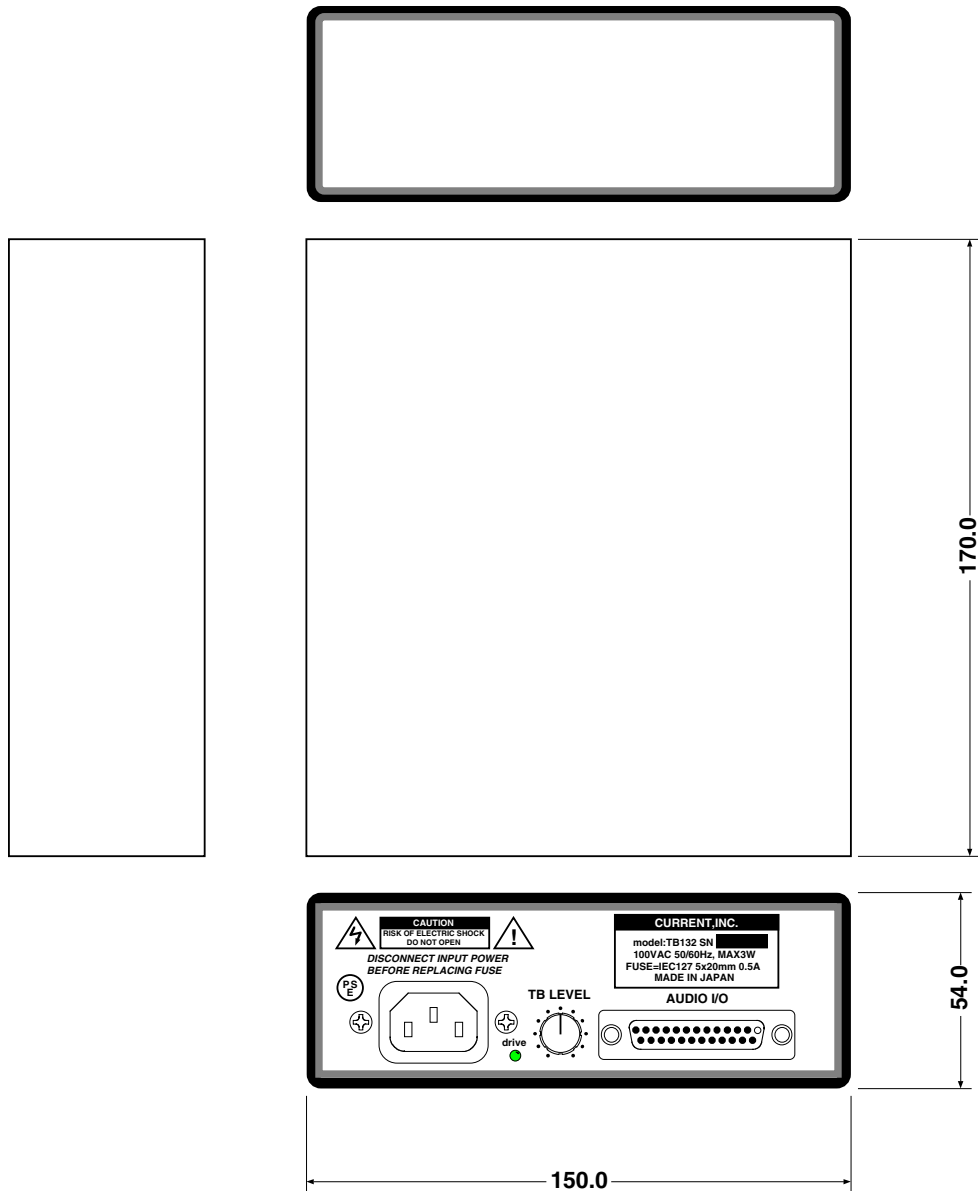


TB Switch



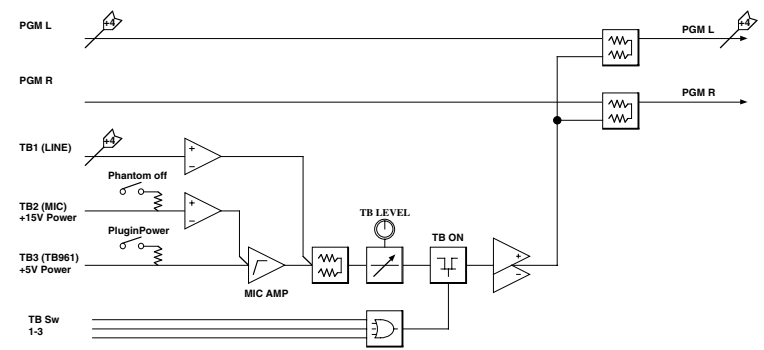
FootSwitch

AF124/T Announce Unit



AUDIO I/O

01 PGM in L+	14 PGM in I-
02 PGM in L GND	15 PGM in R+
03 PGM in R-	16 PGM in R GND
04 PGM out L+	17 PGM out L-
05 PGM out L GND	18 PGM out R+
06 PGM out R-	19 PGM out R GND
07 TB1 +	20 TB1 -
08 TB1 GND	21 TB2 +
09 TB2 -	22 TB2 GND
10 TB3 +	23 TB3 -
11 TB3 GND	24 TB SW 1
12 TB SW 2	25 TB SW 3
13 TB SW common	



(c)CURRENT,INC.	TB MIX TB132	Jun.2006
H.ICHIHASHI	PANEL DIAGRAM	TB132-D

TB132

DSUB25-M (#4-40)

Signal	HD	RB
PGM IN L+	1	1
PGM IN L-	14	2
GND	2	3
PGM IN R+	15	4
PGM IN R-	3	5
GND	16	6
PGM OUT L+	4	7
PGM OUT L-	17	8
GND	5	9
PGM OUT R+	18	10
PGM OUT R-	6	11
GND	19	12
TB1 IN +	7	13
TB1 IN -	20	14
GND	8	15
TB2 IN +	21	16
TB2 IN -	9	17
GND	22	18
TB3 IN +	10	19
TB3 IN -	23	20
GND	11	21
TB SW 1_	24	22
TB SW 2_	12	23
TB SW 3_	25	24
TB SW COM	13	25

PROGRAM INPUTS
FROM CONSOLE/EDITOR

PROGRAM OUTPUTS
TO CUE / COUGH / ETC.

25V47u

MUST BE USE SHEILD CABLE

TB961

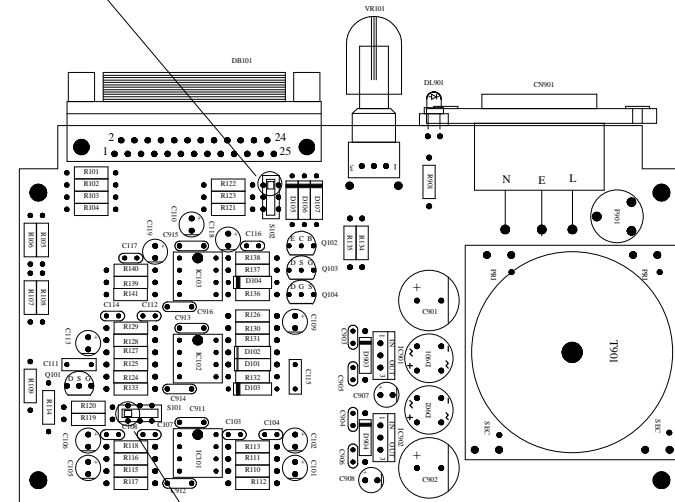
DSUB15-F (#4-40)

RB	HD	Signal
1	1	N.C.
2	9	N.C.
3	2	LP COMMON
4	10	SW COMMON
5	3	TB SW
6	11	TB LP
7	4	CUE SW
8	12	CUE LP
9	5	MINI SW
10	13	MINI LP
11	6	OPT SW
12	14	OPT LP
13	7	MIC +5V
14	15	MIC SIG
15	8	MIC GND
16	/	N.C.

HD=Dsub15

PLUG IN POWER OFF

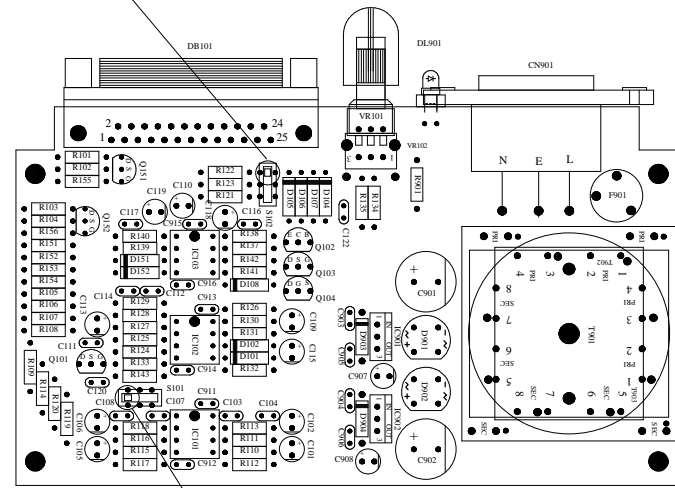
SWITCH SETTING



PHANTOM POWER ON FOR TB2

SWITCH SETTING

PLUG IN POWER OFF



PHANTOM POWER ON FOR TB2

DSUB25-F (#4-40)

Signal	HD	RB
PGM IN L+	1	1
PGM IN L-	14	2
GND	2	3
PGM IN R+	15	4
PGM IN R-	3	5
GND	16	6
PGM OUT L+	4	7
PGM OUT L-	17	8
GND	5	9
PGM OUT R+	18	10
PGM OUT R-	6	11
GND	19	12
TB1 IN +	7	13
TB1 IN -	20	14
GND	8	15
TB2 IN +	21	16
TB2 IN -	9	17
GND	22	18
TB3 IN +	10	19
TB3 IN -	23	20
GND	11	21
TB SW 1_	24	22
TB SW 2_	12	23
TB SW 3_	25	24
TB SW COM	13	25

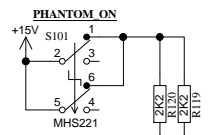
PROGRAM INPUTS FROM CONSOLE/EDITOR

PROGRAM OUTPUTS TO CUE BOX / COUGH

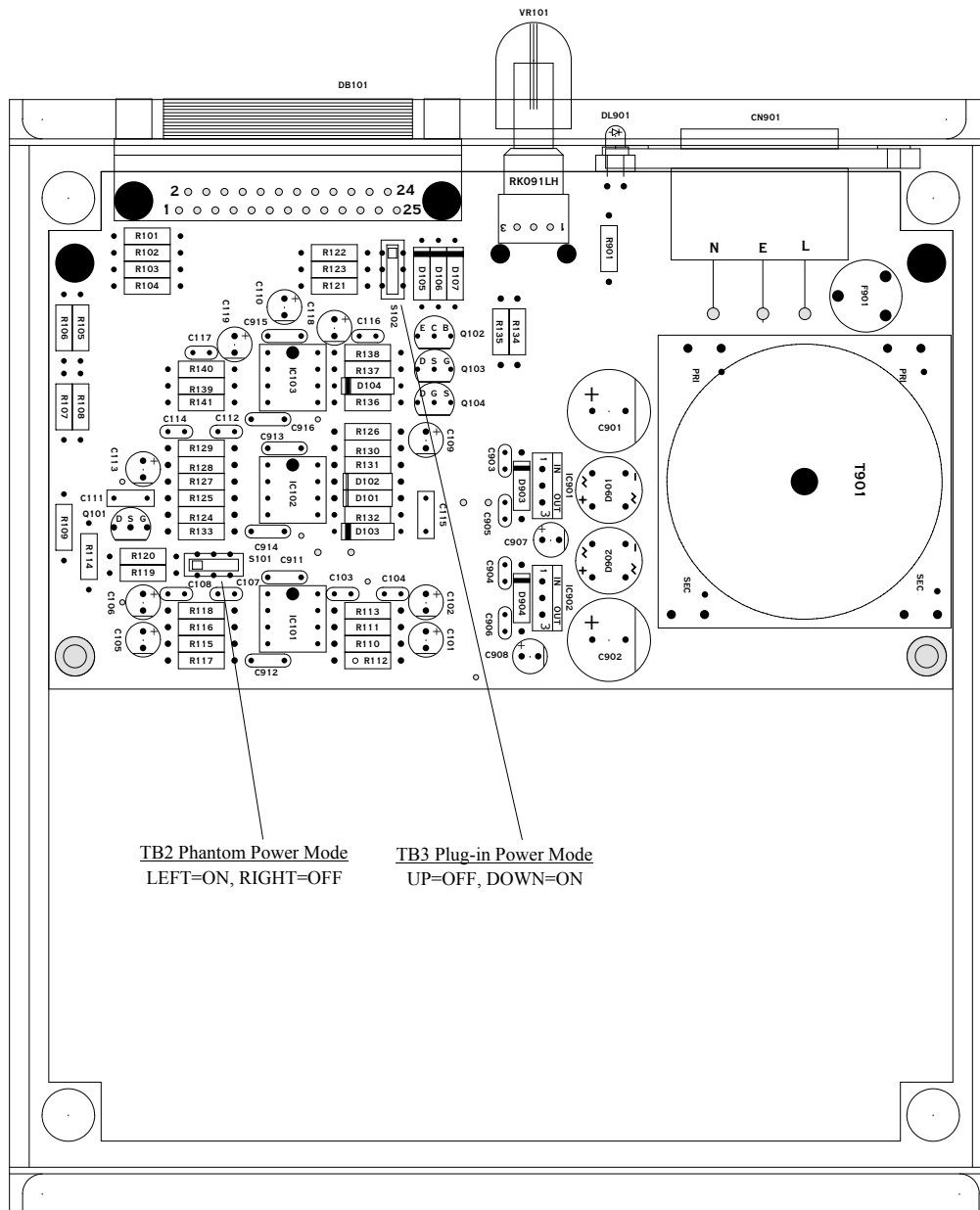
DSUB15-F (#4-40RB)

RB	HD	Signal
1	1	N.C.
2	9	N.C.
3	2	LP COMMON
4	10	SW COMMON
5	3	TB SW
6	11	TB LP
7	4	CUE SW
8	12	CUE LP
9	5	MINI SW
10	13	MINI LP
11	6	OPT SW
12	14	OPT LP
13	7	MIC +5V
14	15	MIC SIG
15	8	MIC GND
16		N.C.

HD=Sub15



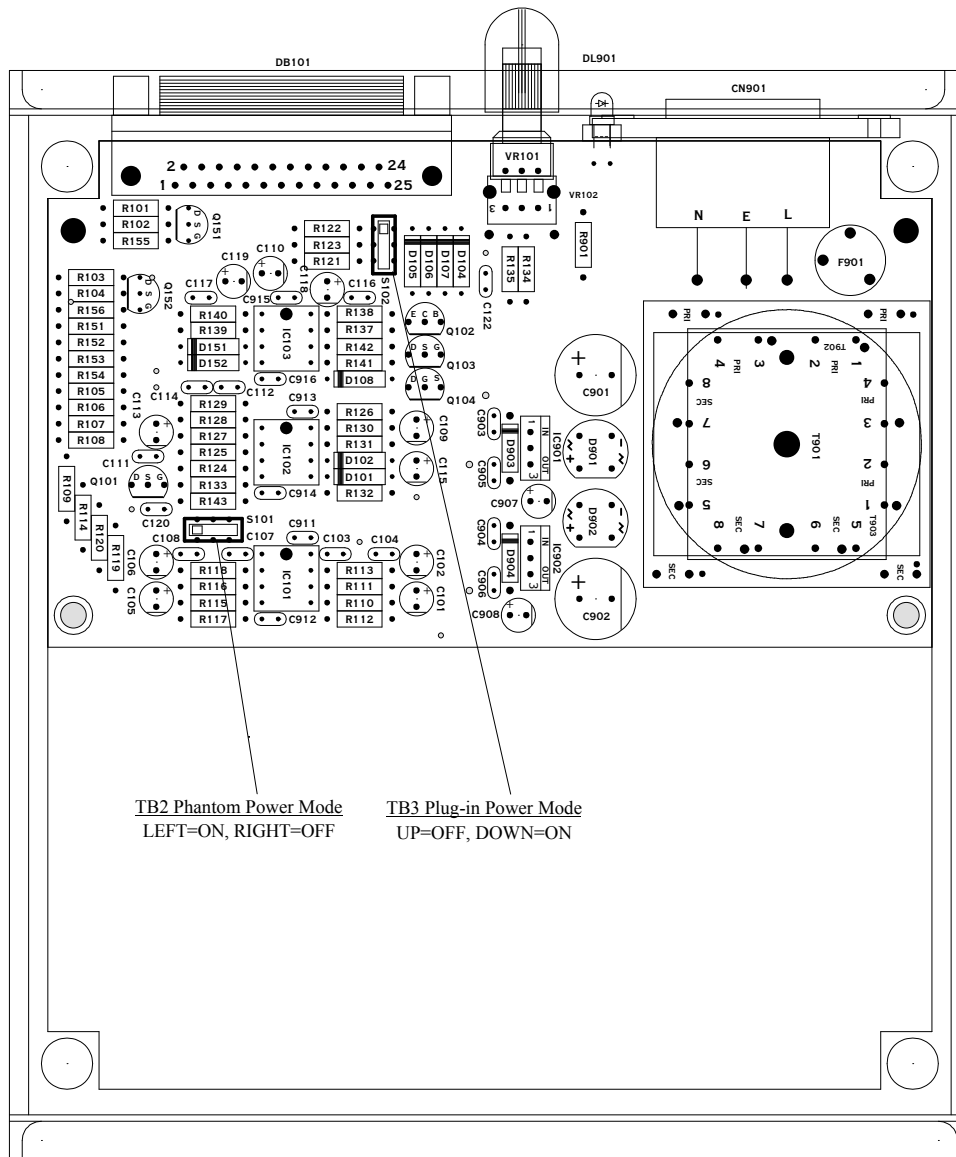
MUST BE USE SHIELD CABLE



TB2 Phantom Power Mode
LEFT=ON, RIGHT=OFF

TB3 Plug-in Power Mode
UP=OFF, DOWN=ON

(c)CURRENT,INC.	TB132	JUN.2006
H.ICHIMASHI	1.100.189	



TB2 Phantom Power Mode
LEFT=ON, RIGHT=OFF

TB3 Plug-in Power Mode
UP=OFF, DOWN=ON

(c)CURRENT,INC.	TB132 rev2	SEP.2015
H.ICHIHASHI	2.100.189	