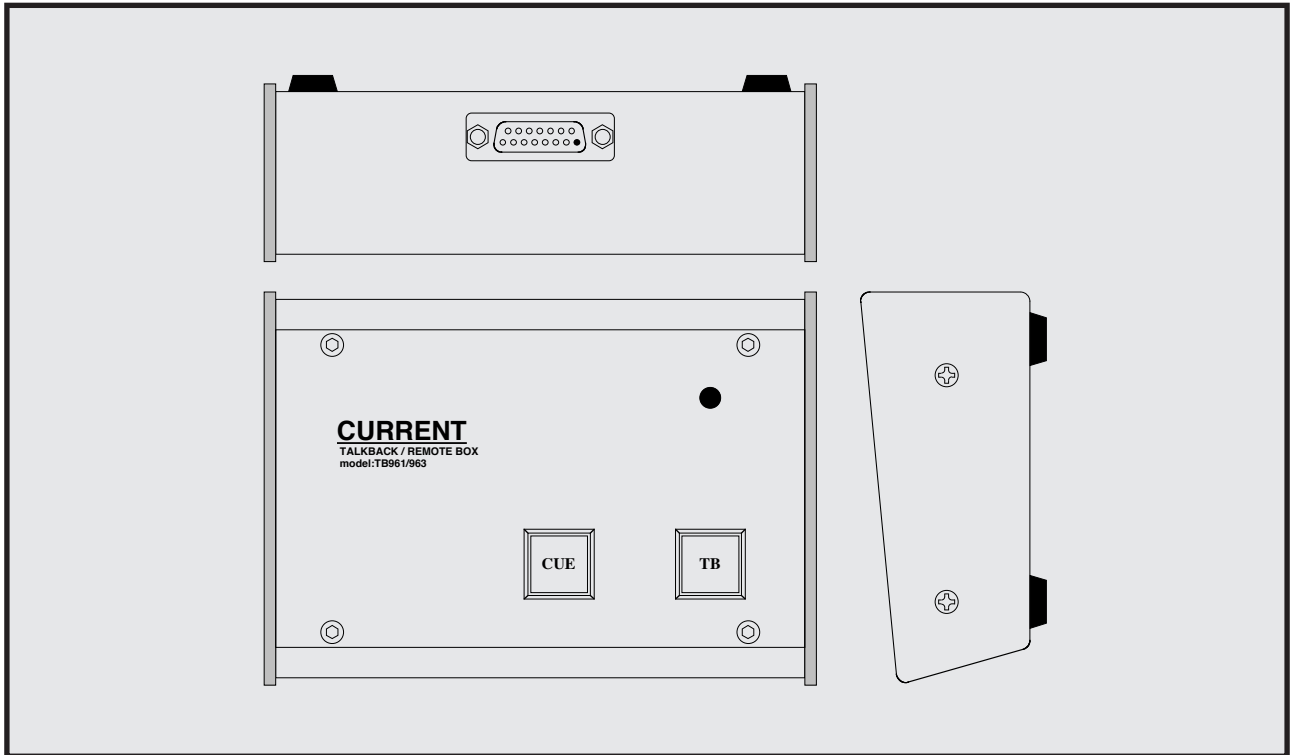


CURRENT PRODUCTS model:TB961/G

TALKBACK BOX



Sophisticated design

Talkback microphone built-in

It can implement up to 4 switches with an option

It can be directly connected with CSP349, AF201A, AF2201, AF224

Any console is connectable

It is most suitable for talkback, CUE sign box

TB961 is 2 button talkback/CUE sign box of TB and CUE developed as recording, the broadcasting, post production studio studio business.

"Tarry lamp"

The LED lamp of each switch of TB961 supports from DC5V to DC24V. It can support in the previous version in the range of DC24V from DC5V by changing internal resistance. Additionally, the tarry in the standard specifications is self illuminated, but it cuts an internal link and can turn it on by a tarry of connected equipment.

"Microphone"

An electret condenser microphone is built in TB961 by default, and it is not necessary to prepare a microphone for communication extra.

There is the goose neck type of the non-standard of high-quality sound, too. When it connects a microphone amplifier for external talkback to the console which does not have directly, a microphone amplifier prepares extra or requires interface such as AF201A.

"Others"

There are a standard built-in microphone type and goose neck type in TB961.

Additionally, it can attach the switch to up to 4 with an option.

Please refer about 48V phantom power support or the microphone amplifier built-in



TB961G Gooseneck model

specifications.

"Attention about the wiring"

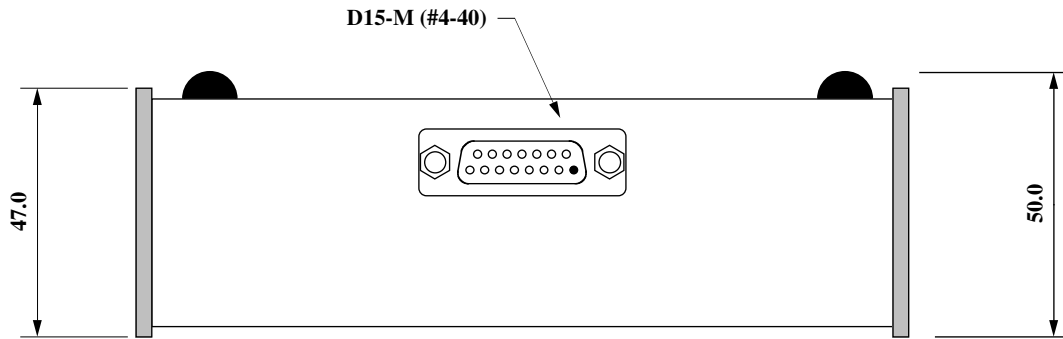
Please connect the microphone line using 2 core shield cable for prevention of noise by all means.

DSUB15-M (#4-40)	
01	09
02 LP COM	10 SW COM
03 TB SW	11 (TB LP)
04 CUE SW	12 (CUE LP)
05	13
06	14
07 MIC +5V(hot)	15 MIC sig(cold)
08 MIC GND	

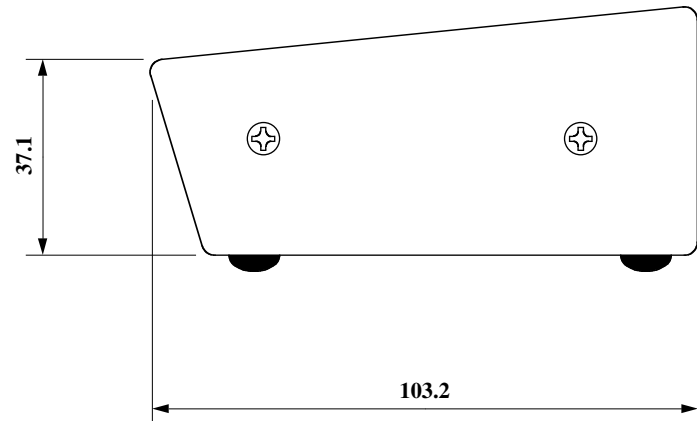
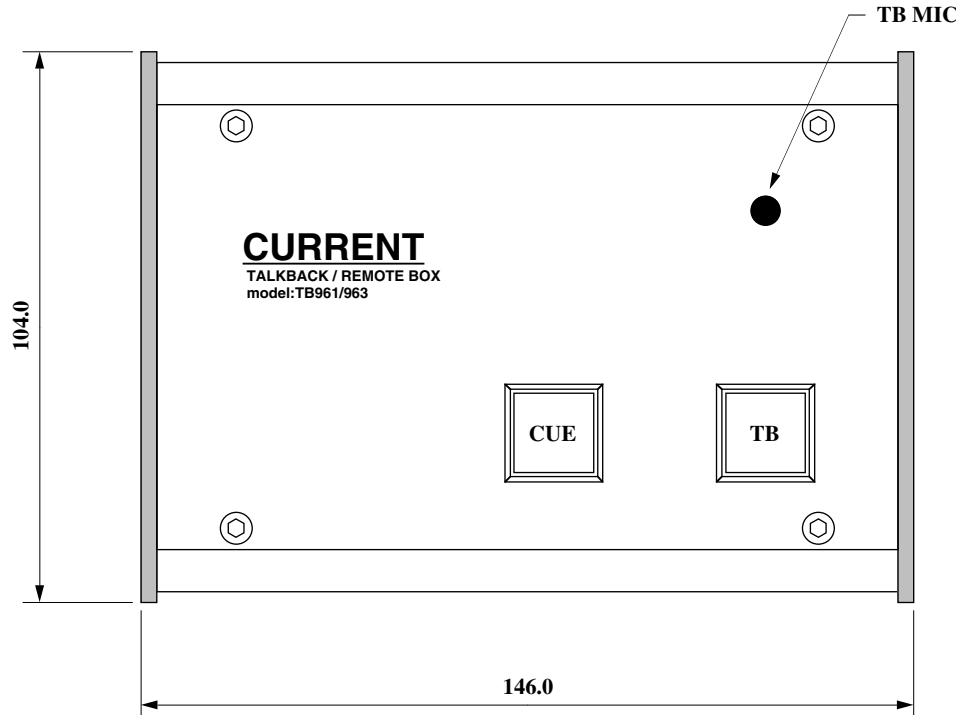
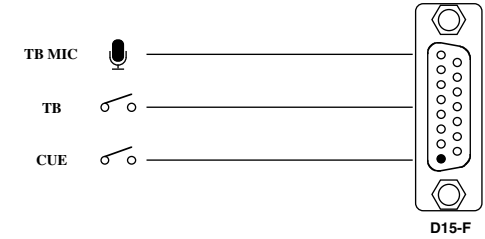
SPECIFICATIONS

- 🍏 **TB SWITCH:** MOMENTARY, MAKE CONTACT
- 🍏 **CUE SWITCH:** MOMENTARY, MAKE CONTACT
- 🍏 **BUILT-IN MIC:** ECM or GOOSENECK
- 🍏 **TALLY LED:** 5~24VDC
- 🍏 **TALLY CURRENT:** approx. 5mA
- 🍏 **SWITCH CONTACT RATING:** 24VDC 50mA
- 🍏 **CONNECTOR:** Dsub15-M (#4-40)
- 🍏 **POWER:** +5VDC for mic
- 🍏 **DIMENSIONS:** 146Wx47Hx104D 0.5kg

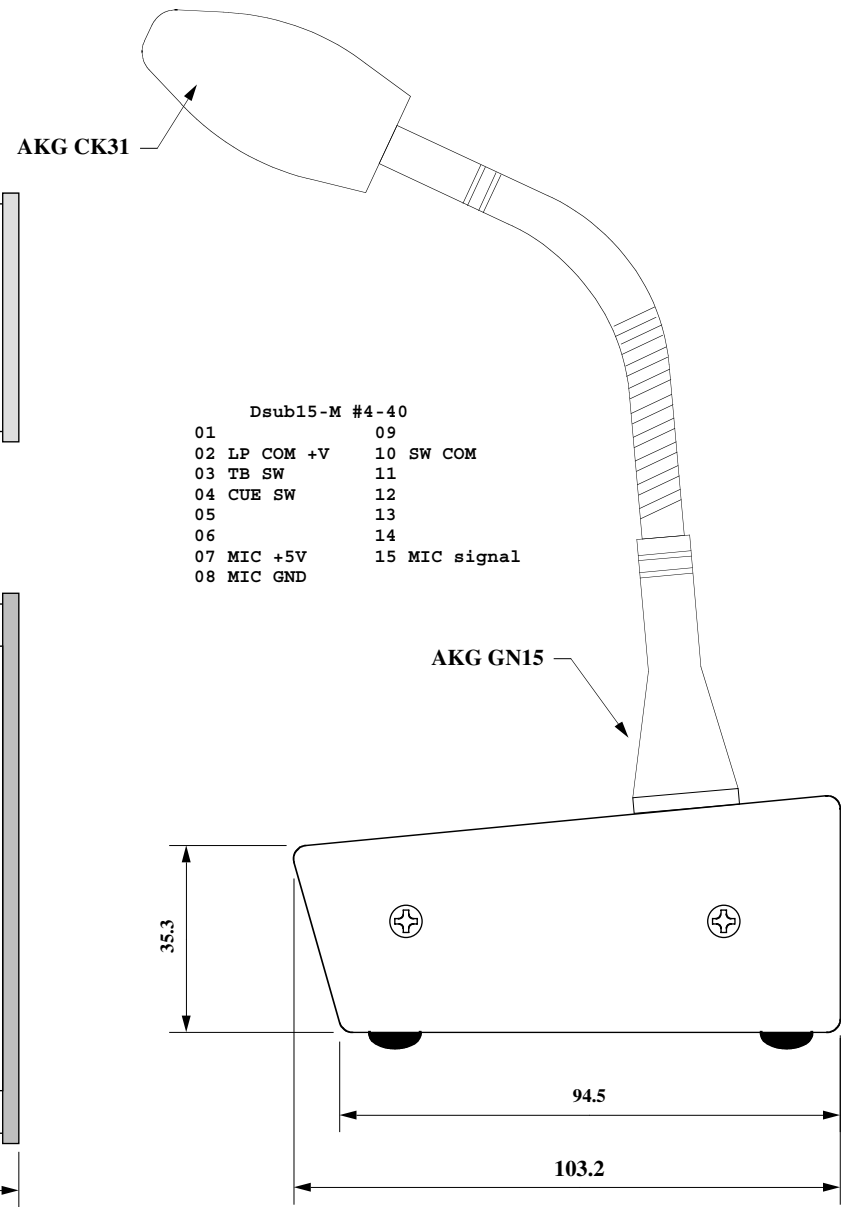
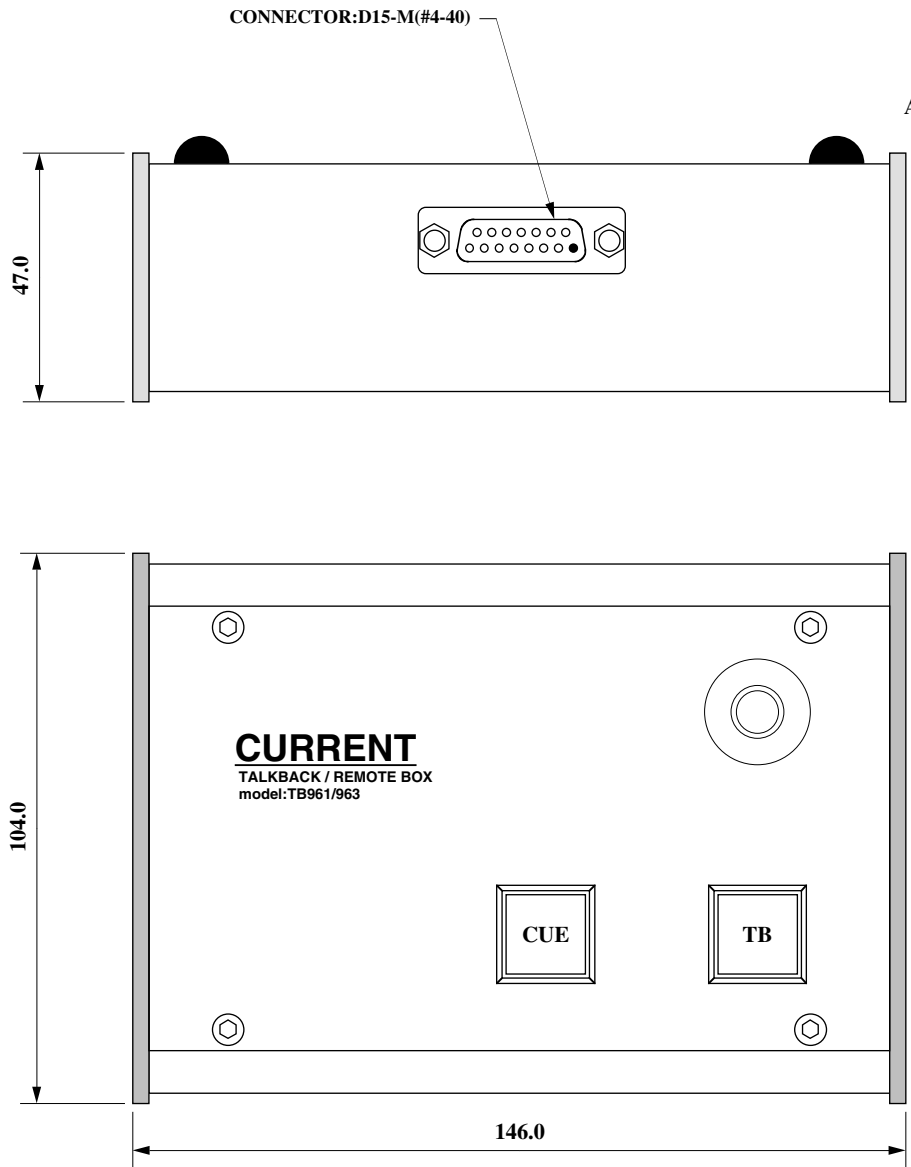
Talkback box	TB961	¥64,000
Talkback box	TB961G	¥98,000
Talkback box	TB961G30	¥104,000
Talkback box	TB961-48	¥72,000
Talkback box	TB961G-48	¥120,000
Talkback box	TB961G30-48	¥124,000
accessory : None		



- Dsub15-M #4-40
- | | |
|----------------------|----------------------|
| 01 | 09 |
| 02 LP COM +5 to +24V | 10 SW COM 0V |
| 03 TB SW | 11 |
| 04 CUE SW | 12 |
| 05 MINI SW (TB963/G) | 13 |
| 06 | 14 |
| 07 MIC +5V (hot) | 15 MIC signal (cold) |
| 08 MIC GND | |

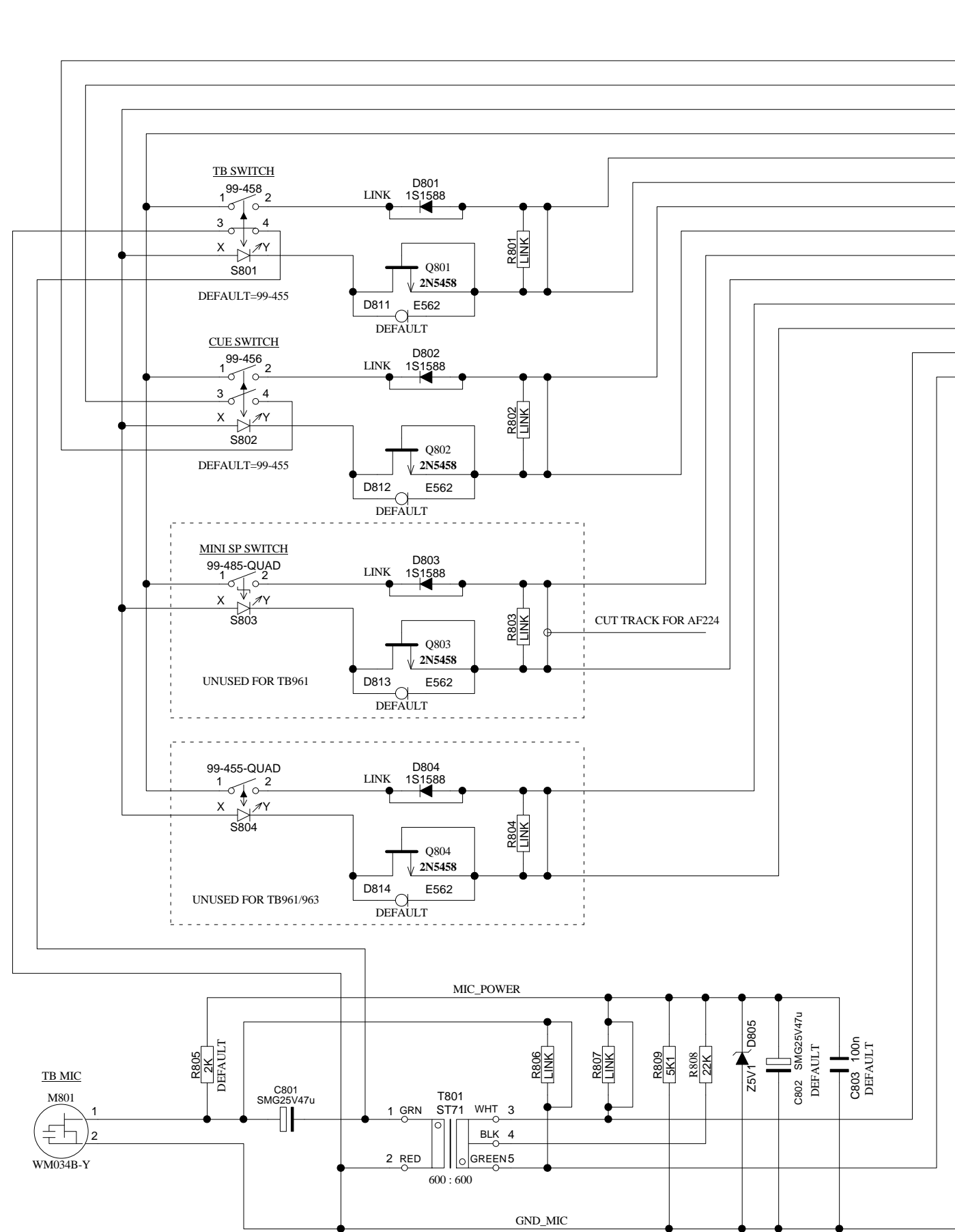


(c)CURRENT,INC.	TALKBACK BOX TB961	Dec.2016
H.ICHIHASHI	PANEL DIAGRAM	Apr.2003
		Jul.1995
		TB961-D2007



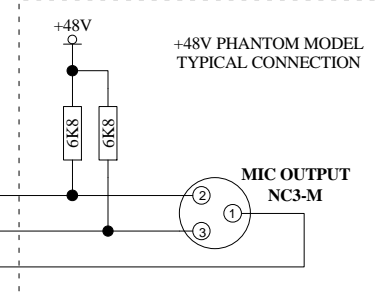
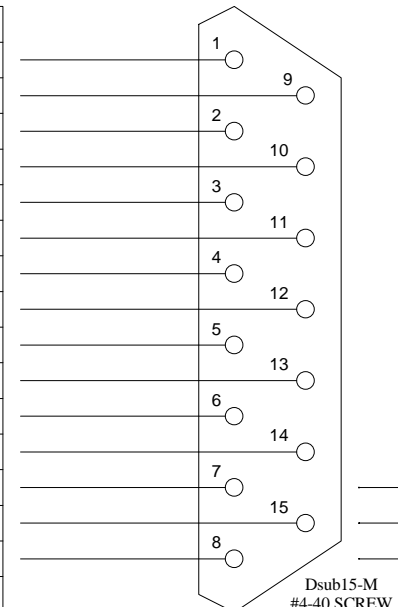
- Dsub15-M #4-40
- | | |
|--------------|---------------|
| 01 | 09 |
| 02 LP COM +V | 10 SW COM |
| 03 TB SW | 11 |
| 04 CUE SW | 12 |
| 05 | 13 |
| 06 | 14 |
| 07 MIC +5V | 15 MIC signal |
| 08 MIC GND | |

(c)CURRENT,INC.	TALKBACK BOX TB961G	Jan.2004
H.ICHIHASHI	PANEL DIAGRAM	TB961G-D



HIF16S RB801

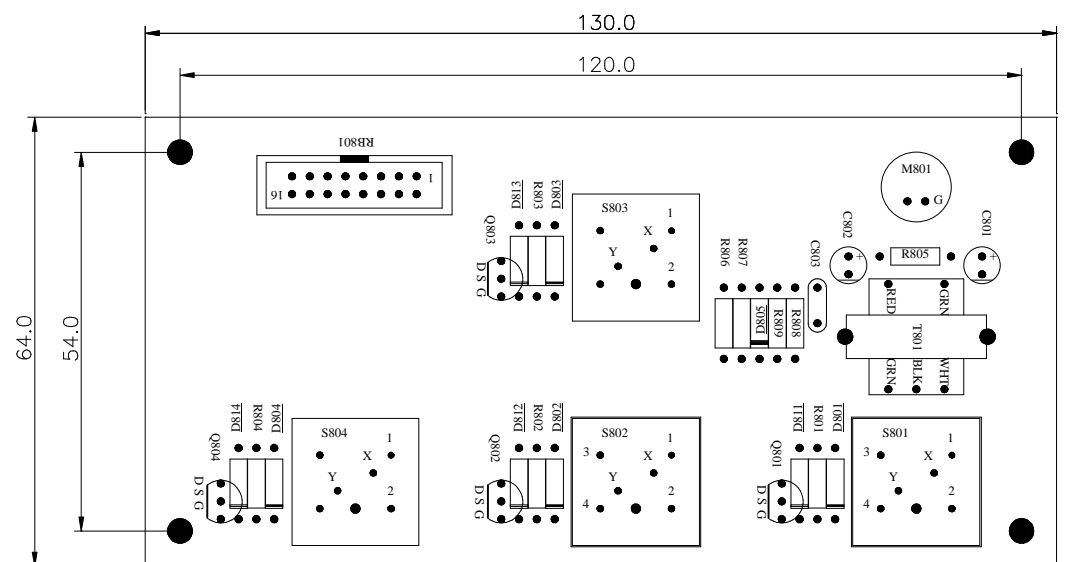
RB	HD	Signal
1	1	CUE-a
2	9	CUE-b
3	2	LP COM
4	10	SW COM
5	3	TB SW
6	11	TB LP
7	4	CUE SW
8	12	CUE LP
9	5	MINI SW
10	13	MINI LP
11	6	OPT SW
12	14	OPT LP
13	7	+5V (MIC+)
14	15	MIC SIG (MIC-)
15	8	MIC GND
16		N.C.



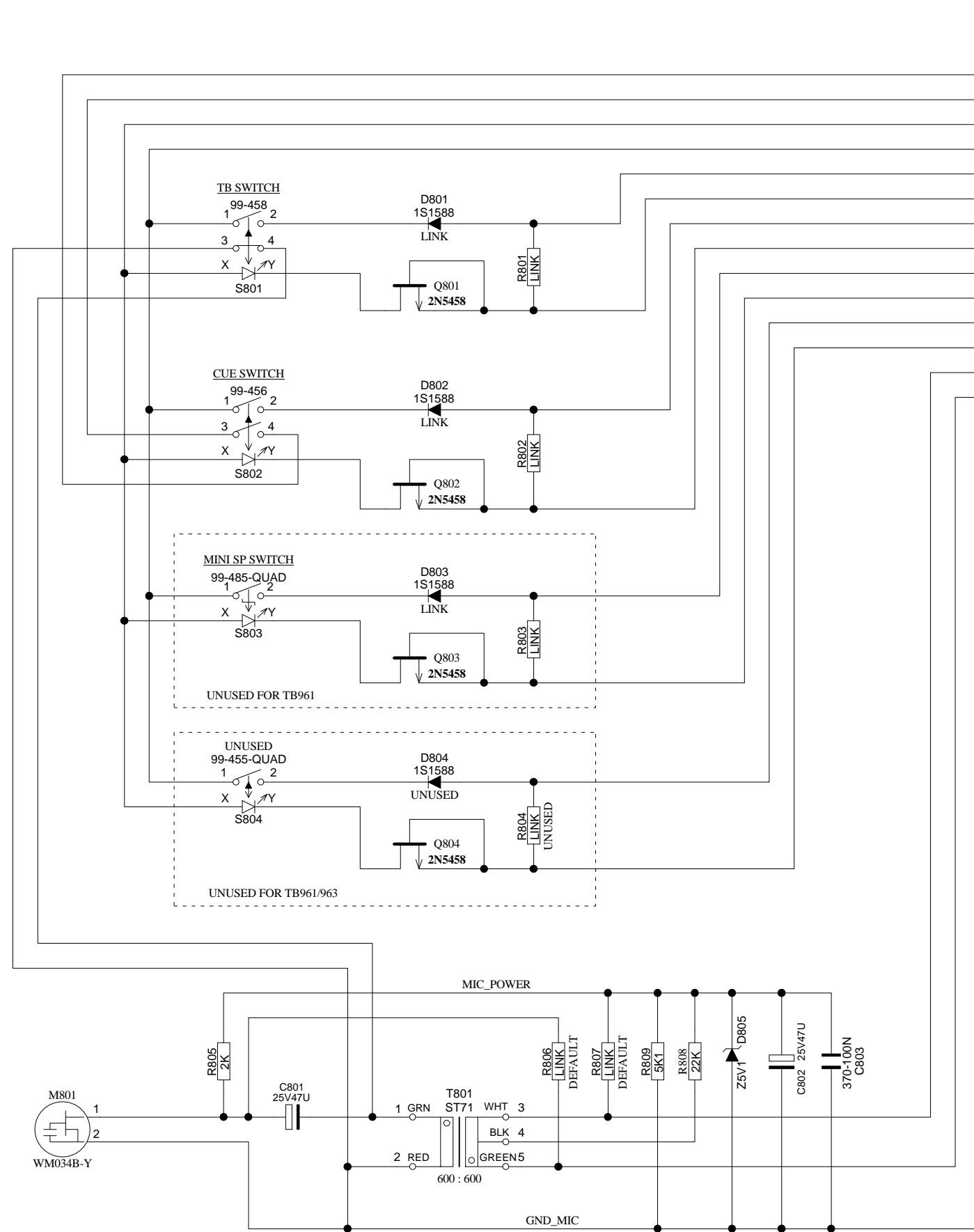
HD=Dsub15
REAR PANEL
Dsub15-M Pin Number
#4-40 SCREW

— MOUNTED - - - CUT TRACK

	TB961	TB961G	TB961-48	TB961G-48	TB963	TB963G	TB963-48	TB963G-48
S801, D811	—	—	—	—	—	—	—	—
S802, D812	—	—	—	—	—	—	—	—
S803, D813	—	—	—	—	—	—	—	—
S804, D814	—	—	—	—	—	—	—	—
R805 (MIC BIAS)	2K	4K7	2K	4K7	2K	4K7	2K	4K7
C801, D805, R808, T801	—	—	—	—	—	—	—	—
R806, 807	—	—	—	—	—	—	—	—
M801	—	—	—	—	—	—	—	—
R809 (MIC POWER >+5V)	—	—	—	—	—	—	—	—

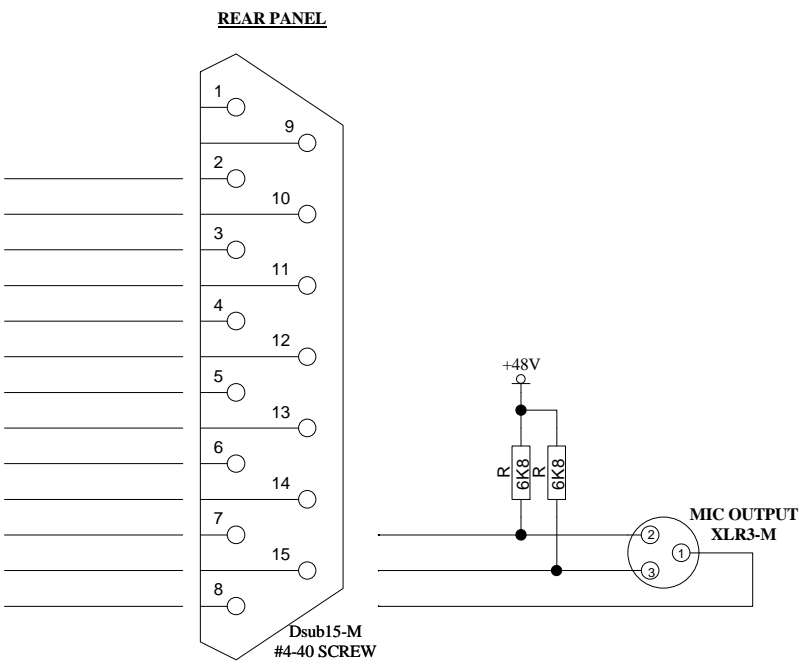


TB961/963



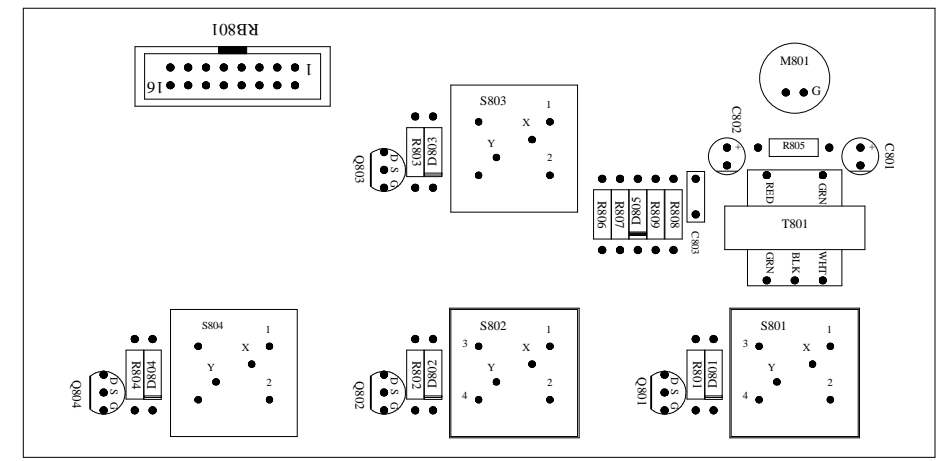
HIF16S		RB801	
RB	HD	Signal	
1	1	CUE-a	
2	9	CUE-b	
3	2	LP COM	
4	10	SW COM	
5	3	TB SW	
6	11	TB LP	
7	4	CUE SW	
8	12	CUE LP	
9	5	MINI SW	
10	13	MINI LP	
11	6	OPT SW	
12	14	OPT LP	
13	7	+5V (MIC+)	
14	15	MIC SIG (MIC-)	
15	8	MIC GND	
16		N.C.	

HD=Dsub15
REAR PANEL
Dsub15-M Pin Number #4-40 SCREW



— MOUNTED

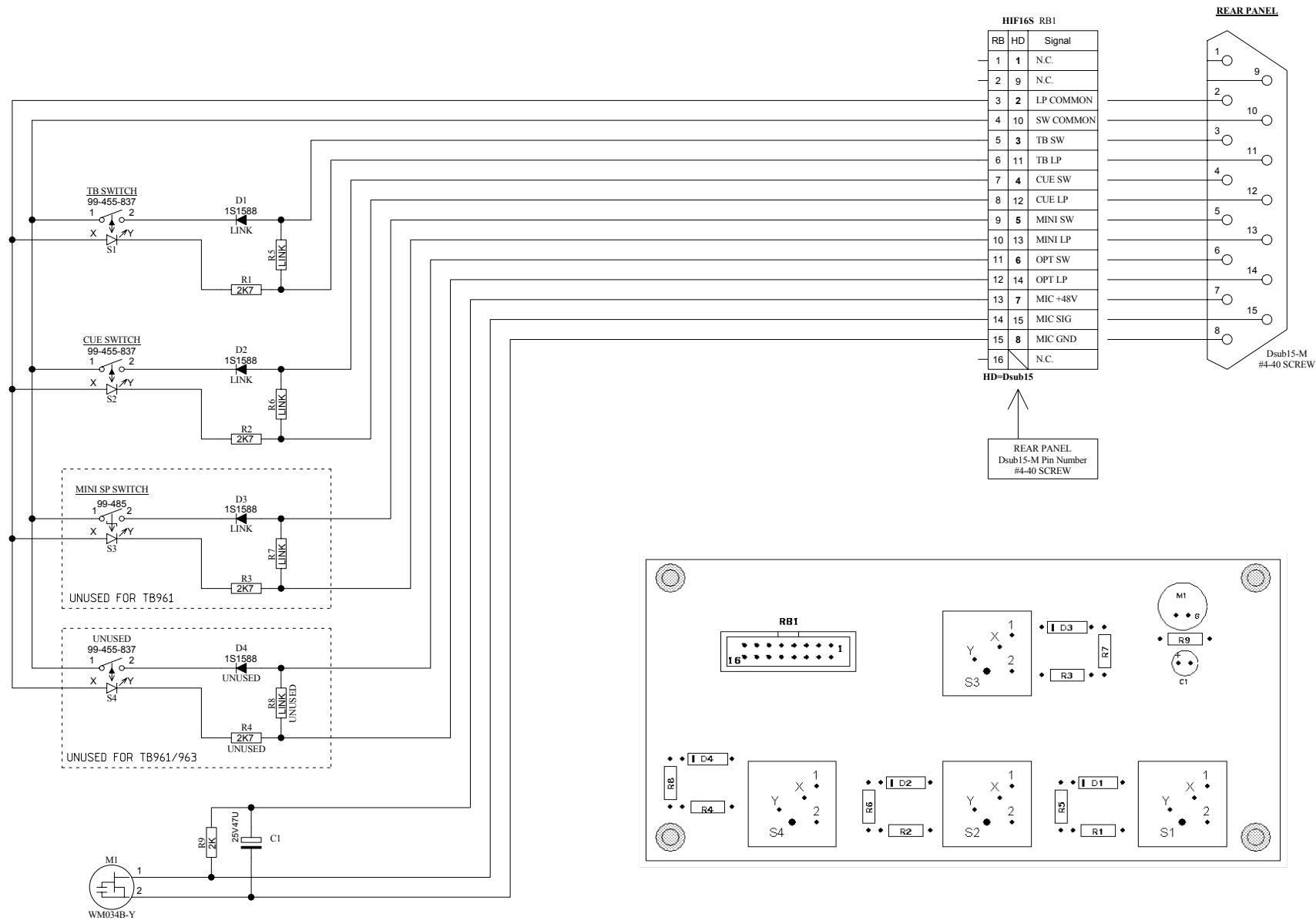
	TB961	TB961G	TB961-48	TB961G-48	TB963	TB963G	TB963-48	TB963G-48
S801, D801	—	—	—	—	—	—	—	—
S802, D802	—	—	—	—	—	—	—	—
S803, D803	—	—	—	—	—	—	—	—
S804, D804	—	—	—	—	—	—	—	—
R805 (MIC BIAS)	2K	4K7	2K	4K7	2K	4K7	2K	4K7
C801, D805, R808, T801	—	—	—	—	—	—	—	—
R806, 807	—	—	—	—	—	—	—	—
M801	—	—	—	—	—	—	—	—
R809 (MIC POWER >+5V)	—	—	—	—	—	—	—	—



This is old circuit board

TB961/963

(c)CURRENT,INC.	TB961/963 TALKBACK BOX	SEP.2007
H.ICHIHASHI	1.100.203	1 OF 1



This is old circuit board version