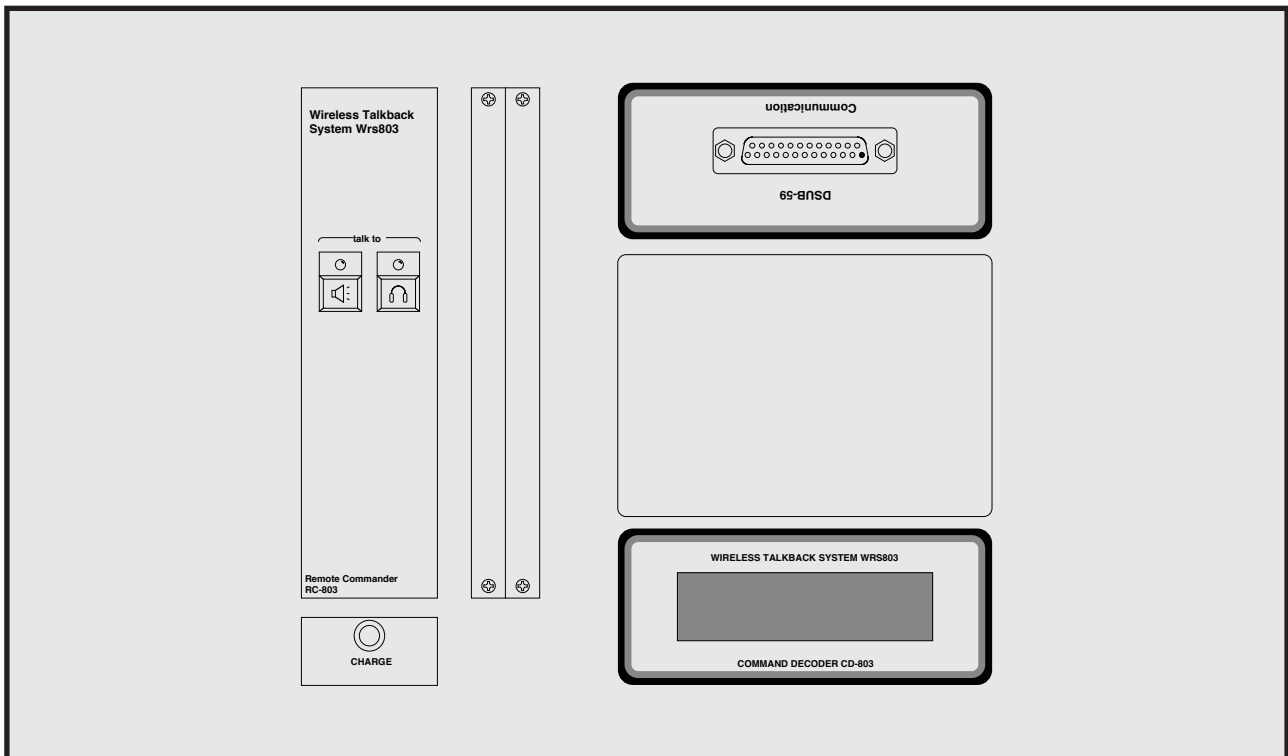


CURRENT PRODUCTS model:WRS803

WIRELESS TALKBACK SYSTEM



Compact controller

The infrared that equipment does not have the electrical effect

2 output

It is supported by a learning wireless remote controller

Charge-style controller

WRS803 is a system to make the talkback switch in the studio by wireless. It can connect the relay contact output of the receive section to any equipment, and utilization is possible for the CUE sign to a recording booth.

"Infrared wireless remote controller"

It uses infrared for the purpose of avoiding various problems at having used radio wave in WRS803. It supports to a commercially available learning wireless remote controller. It can serve the wireless remote controller of most audio visual systems with 1 controller if it registers with the audio visual system in the studio with a learning wireless remote controller.

"Relay contact"

A receiver can output a make contact and the break contact (by the factory internal adjustment) by the relay and can make interface of various equipment easily.

"Remote distance"

The arrival of the infrared is approximately 10m, but there is a difference by studio interior decoration processing. In the case of black cross finish, infrared is easy to be absorbed, and the outreach shortens

because there are few reflections. On the contrary, in the case of a finished wall, a working having good is provided with a stone and a tree brightly.



SPECIFICATIONS

[COMMAND DECODER]

🍏DIMENSIONS: 40Wx150Hx20D

🍏CONTROL: 2 SWITCHES

🍏POWER: Ni-Cd UM3x2 RECHARGEABLE

🍏MAX DISTANCE: APPROX.10m

[COMMAND RECEIVER]

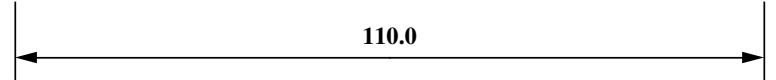
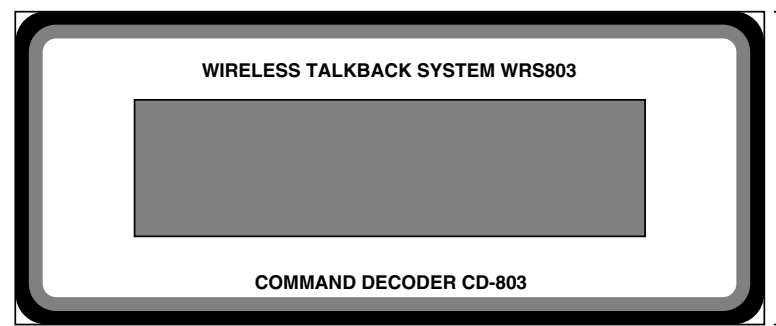
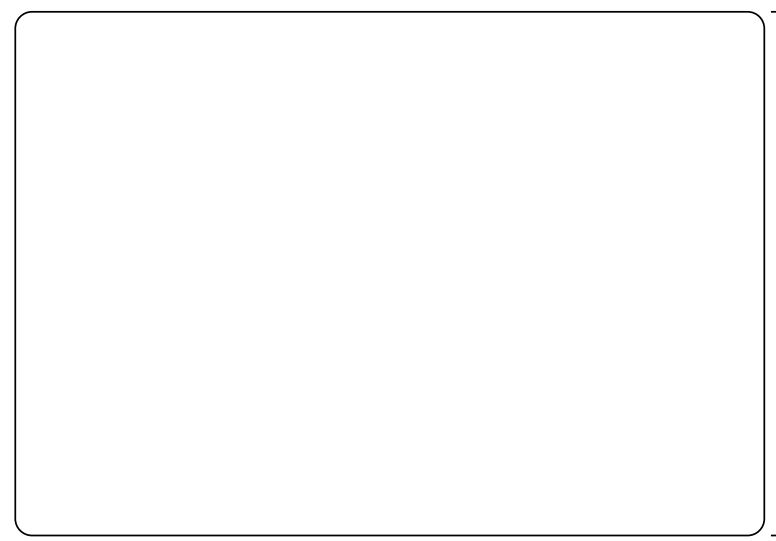
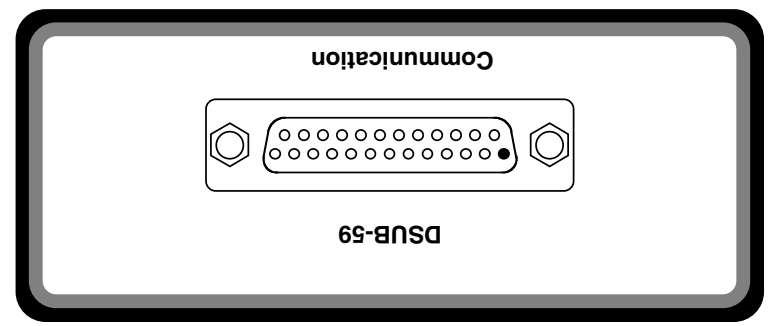
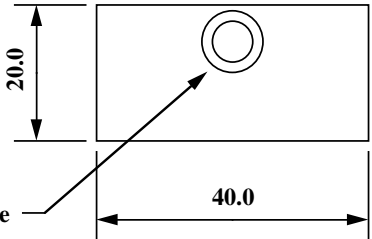
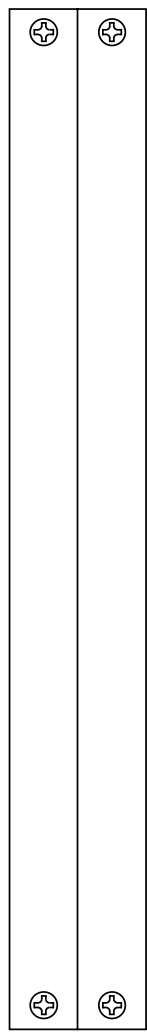
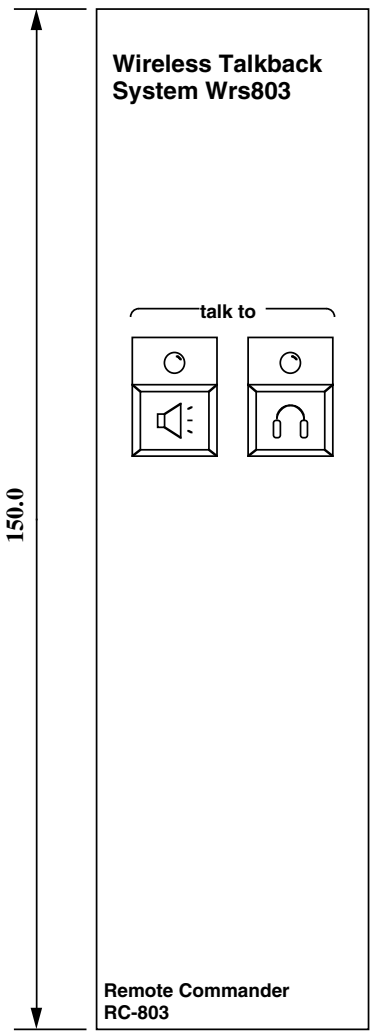
🍏DIMENSIONS: 110Wx140Hx46D

🍏CONNECTOR: D-TYPE 25WAY MALE (#4-40)

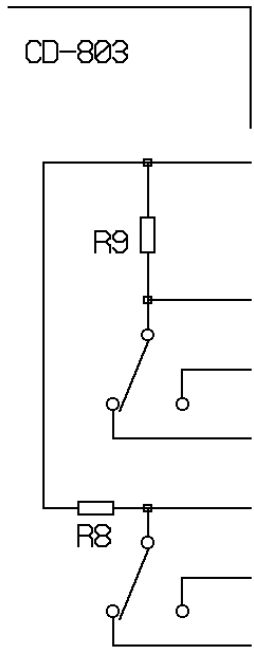
🍏POWER: DC +5 ~ +24VDC

🍏OUTPUTS: RELAY CONTACT

Wireless TB	WRS803	¥96,000
accessory : charger		



CURRENT,INC.	WIRELESS TALKBACK SYSTEM WRS803	JUL.95
H.ICHIHASHI	PANEL DIAGRAM	



CD-803

SSL CONSOLE

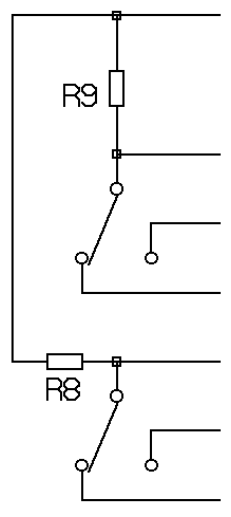
RB	HD		CONSOLE DL59
1	1	+VCC	P2 +18V
2	14	0V	M2 0V
3	2		
4	15		A7 OMNI SW (MODIFIED SLS or TB ALL SW)
5	3		
6	16		
7	4		A6 CUES SW
8	17		: IF NOT FITTED DL59 THEN CONNECT TO SWITCH TERMINAL AT PRODUCER'S PANEL

CHASSIS
DSUB25 MALE

USE DSUB25 FEMALE PLUG

OTHER CONSOLE

REMOVE R 8,9



RB	HD		
1	1	+VCC	+VCC 10-24V DC
2	14	0V	0V
3	2		
4	15		
5	3		
6	16		
7	4		
8	17		

CONSOLE
COMMUNICATION
LOGIC

